

# Retail Catalogue



Friedhelm  
Schumacher OHG



Quality products by



[www.friedhelm-schumacher.de](http://www.friedhelm-schumacher.de)



For over 35 years the family-run company Friedhelm Schumacher OHG with seat in Straelen, Germany, has been manufacturing high-end brass door and furniture hinges exceptional quality.

The combination of a continuing passion for high-quality materials, an eye for skilled craftsmanship and the use of innovative machine technology ensure that the range of brass door-lift off and butt hinges, the furniture hinges as well as the stainless steel lift-off hinges are continuously available to the valued and long-standing customers in its proven quality.

In today's fast-paced business environment, Friedhelm Schumacher OHG strives to constantly improve the quality of its products by investing in trainings for its expert workforce, modern manufacturing techniques and exclusive delivery service.

The family business Friedhelm Schumacher OHG offers high performance products in exclusive quality at a fair price.

We are looking forward to your inquiry!



*R. Schumacher*  
Ralf Schumacher, owner

*K. Schumacher*  
Karsten Schumacher, owner

## Old order numbers - simpler ordering system

With the help of a clearly arranged generator the order system simplified. Different blocks can be quickly traced to the order number of the desired product together. The listed numbers under the categories will be then inserted into the order fields.

To do this, select the numbers that are need for the desired product to be ordered.

As soon as all fields are filled out, the order number results, with which the product can be ordered.



### Favoured hinge should have the following properties:

Brass door lift-off hinge cranking D 13

15 mm roll-Ø  
3,0 mm leaf thickness

- 140 mm length
- nickel-plated polished
- final tip ZK19
- DIN version right
- cylindrical
- angular

### Article number

3	4	04	3	6	0
<b>Version:</b>	<b>Lengths:</b>	<b>Surfaces:</b>	<b>Final tip:</b>	<b>DIN version:</b>	<b>Corners:</b>
15 mm Ø, 3 mm leaf thickness	3. 100 mm 8. 120 mm 4. 140 mm 5. 160 mm	01. brass polished 02. brass matt blasted or brushed 03. nickel-plated blasted or brushed 04. nickel-plated polished 05. antique 06. burnished 07. ...	1. cylindrical 2. ZK 9a 3. ZK 19 4. ZK 9 5. ZK A 6. ZK B 8. ZK E 9. ZK D	6. right 7. left	0. angular 4. four rounded corners



## FROM STRAELEN THROUGHOUT THE WHOLE WORLD

All over the world craftsman trust in our hinges. The high quality is appreciated everywhere.

Our family business is located in Straelen, at the Lower Rhine. From here our hinges are sent all over the world. Thus, FS fittings are installed on almost every continent in public and government buildings.

So our quality hinges find their application onshore in almost every building on cupboards and doors, as well as on the oceans in cruises and yachts. But our hinges are also to be found on the streets of Europe in caravans and motorhomes.

FS - Our symbol, known throughout the world for quality and perfection.



## THE RIGHT SIZE

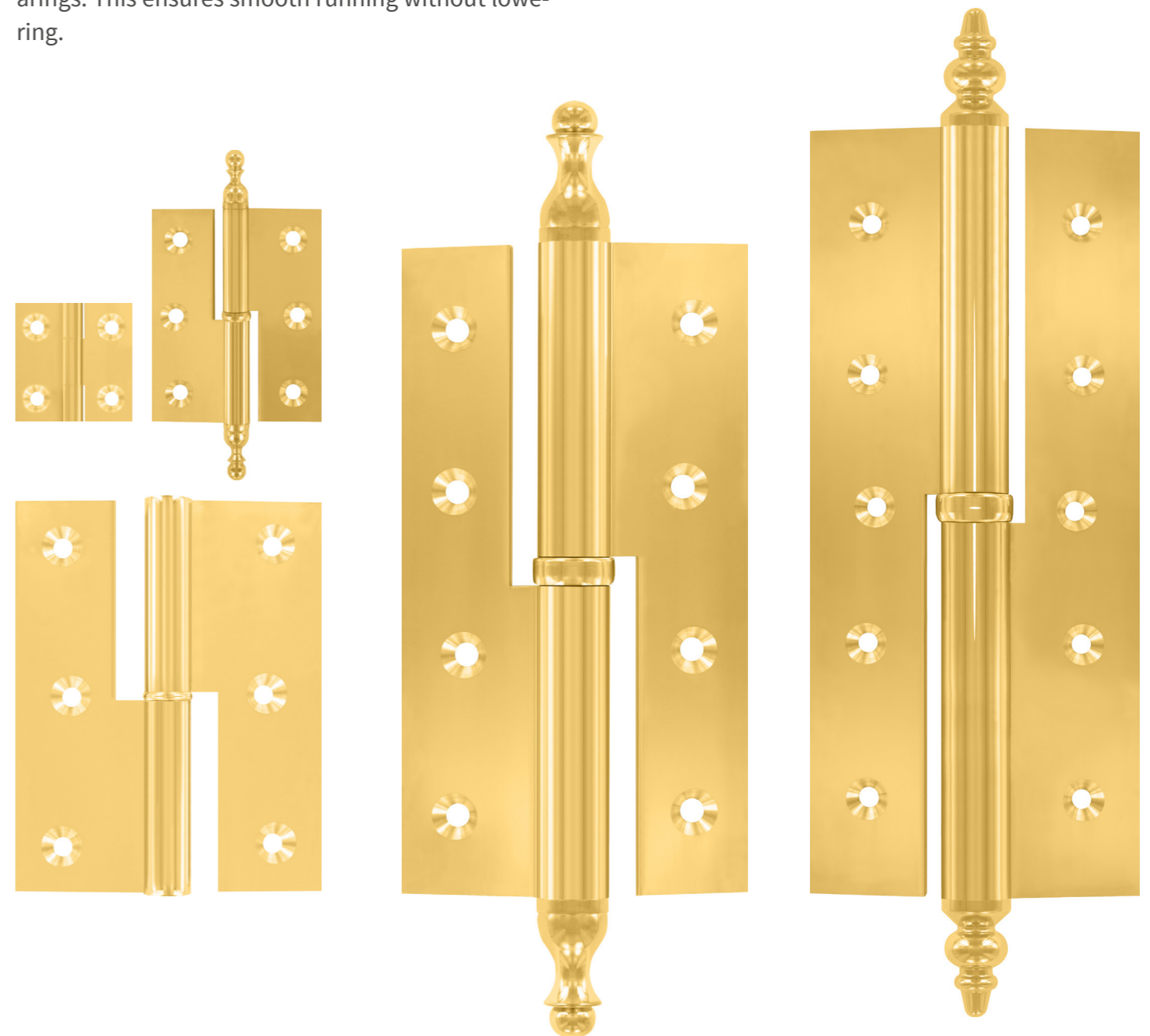
The right hinge for every purpose. Whether with a height of two centimeters or a maximum load of up to 300 kg.

Depending on the application, other qualities of our fittings are required. So we produce fittings for doors, furniture, campers, ships and much more. Starting with a leaf size of 20 mm up to 200 mm - we always have the right hinge.

But not only the size is a criterion for our hinges. Rather, our tapes come into play, when a high load capacity is required. Not infrequently, our hinges are exposed to high loads in hotels and on palace doors. That's why we use specially made ball bearings. This ensures smooth running without lowering.

Our extra large and robust hinges have a maximum capacity load of up to 300 kg. They are perfect for heavy front or entrance doors.

Due to the precise production of our hinges, they are also ideal for many other special purposes. Thus, the hinges do not wear out to vibration and shock. The use in mobile homes and on ships therefore ensures long-lasting and smooth-running doors without dragging.





**General information**

Technical information	page 7
Pictures with 16 different surfaces	page 9
Bicolor	page 11
Final tip	page 12
Cabinet lift-off hinges technical information	page 31

**Brass door lift-off hinges**

straight	15 mm roll-Ø,	30 mm leaf width	80 - 160 mm	bis 80 kg	page 13
straight	16 mm roll-Ø,	35 mm leaf width	100 - 200 mm	bis 140 kg	page 15
straight	16 mm roll-Ø,	40 mm leaf width	140 - 200 mm	bis 140 kg	page 17
straight	18 mm roll-Ø,	34 mm leaf width	140 - 200 mm	bis 200 kg	page 19
Door butt hinges 400-91	15 mm roll-Ø,	30 mm leaf width	100 - 120 mm	bis 60 kg	page 21
Door butt hinges 400-91	16 mm roll-Ø,	35-40 mm leaf width	100 - 120 mm	bis 80 kg	page 21
Cranking D13	15 mm roll-Ø,	3,0 mm leaf thickness	100 - 160 mm	bis 80 kg	page 23
Cranking D13	16 mm roll-Ø,	3,5 mm leaf thickness	100 - 200 mm	bis 140 kg	page 25
Cranking D14	15 mm roll-Ø,	4,0 mm leaf thickness	140 - 200 mm	bis 200 kg	page 27
Cranking B / C	16 mm roll-Ø,	25/35 mm leaf thickness	100 - 200 mm	bis 140 kg	page 29

**Cabinet lift-off hinges**

straight	6 mm roll-Ø	Cabinet lift-off hinges	40 - 60 mm	up to 8 kg	page 33
straight	6 mm roll-Ø	Decorative cabinet lift-off hinges	40 - 60 mm	up to 8 kg	page 34
straight	8 mm roll-Ø	Cabinet lift-off hinges	40 - 120 mm	up to 20 kg	page 35
straight	8 mm roll-Ø	Decorative cabinet lift-off hinges	40 - 120 mm	up to 20 kg	page 36
straight	11 mm roll-Ø	Cabinet lift-off hinges	50 - 120 mm	up to 25 kg	page 37
straight	11 mm roll-Ø	Decorative cabinet lift-off hinges	50 - 120 mm	up to 25 kg	page 38
Cranking D7,5	6 mm roll-Ø	Cabinet lift-off hinges	40 - 60 mm	up to 8 kg	page 39
Cranking D7,5	6 mm roll-Ø	Decorative cabinet lift-off hinges	40 - 60 mm	up to 8 kg	page 40
Cranking D7,5	8 mm roll-Ø	Cabinet lift-off hinges	40 - 120 mm	up to 20 kg	page 41
Cranking D7,5	8 mm roll-Ø	Decorative cabinet lift-off hinges	40 - 120 mm	up to 20 kg	page 42
Cranking D7,5	11 mm roll-Ø	Cabinet lift-off hinges	50 - 120 mm	up to 25 kg	page 43
Cranking D7,5	11 mm roll-Ø	Decorative cabinet lift-off hinges	50 - 120 mm	up to 25 kg	page 44
Cranking B	8 mm roll-Ø	Cabinet lift-off hinges	40 - 120 mm	up to 20 kg	page 45
Cranking B	8 mm roll-Ø	Decorative cabinet lift-off hinges	40 - 120 mm	up to 20 kg	page 46

**Special hinges**

Angled belt blunt overlay doors	8 mm roll-Ø	50 - 100 mm	up to 18 kg	page 47	
Sewing table hinge				page 48	
Decorative cabinet lift-off hinges half leaf	8 mm roll-Ø	60 - 80 mm	up to 14 kg	page 49	
doors and flap hinges	8 mm roll-Ø	50 - 60 mm	up to 12 kg	page 50	
Solid brass hinges 507 - 100				page 57	
Window hinges straight	12 mm roll-Ø	80 - 120 mm	up to 25 kg	page 59	

**Brass mortise hinge**

8 + 10 mm roll-Ø		80 - 120 mm	up to 14 kg	page 51
12 mm roll-Ø		80 - 120 mm	up to 25 kg	page 53
14 mm roll-Ø		100 - 160 mm	up to 50 kg	page 55

**Stainless steel hinges**

Stainless steel hinges	straight	12 mm roll-Ø	80 - 100 mm	bis 40 kg	page 61
Stainless steel hinges	straight	16 mm roll-Ø	100 - 160 mm	bis 100 kg	page 62
Stainless steel hinges	cranking D13	12 mm roll-Ø	100 mm	bis 40 kg	page 63
Stainless steel hinges	cranking D13	16 mm roll-Ø	100 - 160 mm	bis 100 kg	page 64

**KS-Hinges**

KS-Hinges				page 65

The delivery of our products takes place over the building hardware specialized trade under consideration of our trading conditions.

Some of the drawings and articles shown do not correspond to the original size.

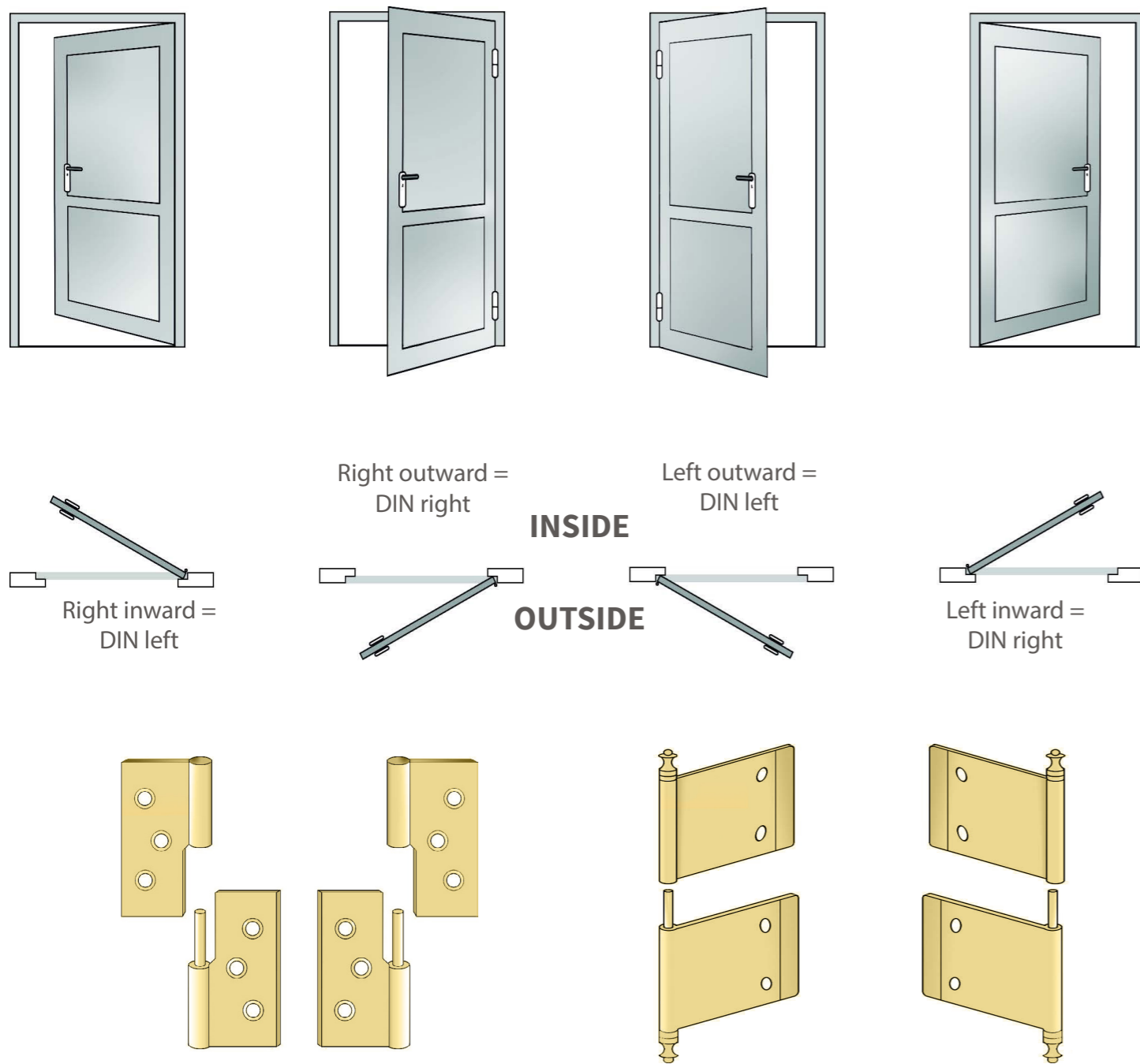
We reserve the right to make changes which serve the purpose of technical improvement. Program changes by deletion or additions can take place without special information.

We do not assume any liability for printing errors, mix-ups etc..

No part of this catalogue may be reproduced without our explicit permission.



### Right- or left-hand hinge?



All hinges are available with rounded corners.

- |                                   |                             |   |              |
|-----------------------------------|-----------------------------|---|--------------|
| Cabinet lift-off hinges, straight | with 4 rounded corners      | → | radius 5 mm  |
| Door lift-off hinges, straight    | with 4 rounded corners      | → | radius 10 mm |
|                                   | also with 6 rounded corners | → | radius 10 mm |
| Door lift-off hinges with KD 13   | with 4 rounded corners      | → | radius 10 mm |

Door lift-off hinges are available with aperture for oil and securing pin.

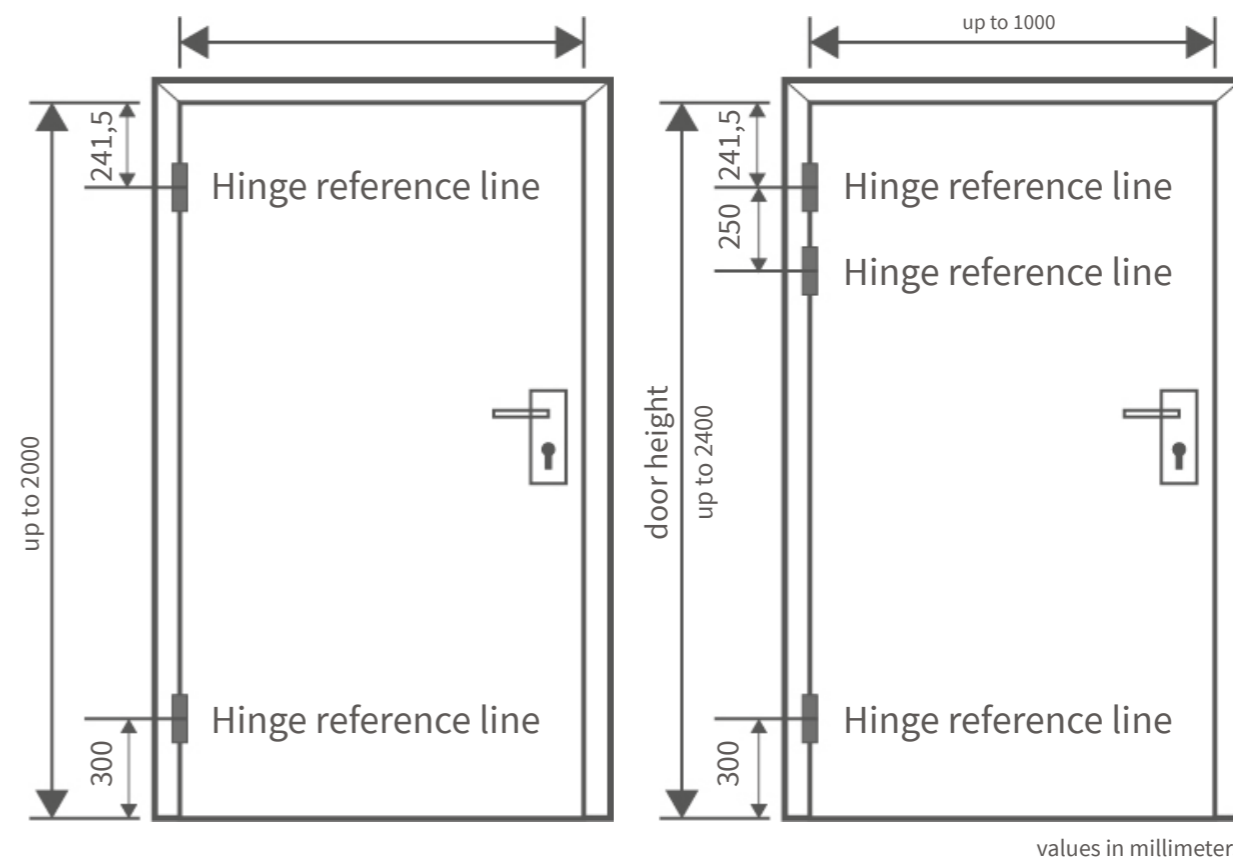
### Rabbit and assembly instructions

For a door with a 3rd hinge, it is not installed in the middle, but approximately 250 mm below the upper hinge. This increases the load capacity. The door bumpers are mounted as far from the hinge pivot as possible, so leverage forces on the hinges do not damage the doors.

### Recommended hinge position for wide and heavy doors

Because of the length of the hinge for wide and heavy doors, the distance between the two upper hinges must be increased accordingly.

### Hinge position for doors recording to DIN 18101



### Hinge reference lines

The band reference line is a theoretical line in a door hinge. It allows an accurate determination of the tape ownership in its altitude in the frame and the door leaf. The ribbon reference line guarantees precise assembly.

In DIN 18101 the band seat and in DIN 18268 the band reference line for the different types of door hinges is decided.

### Maintenance

To protect against corrosion, the ball bearings and axle pin of the door fittings are slightly oiled. Before mounting, the axle pin should be sufficiently lubricated with oil or bearing grease. Depending on the load, it is necessary to relubricate, so that a long service life as well as an always lighter and noiseless belt run can be achieved.



01 | brass polished



02 | brass matt  
blasted/brushed



03 | nickel-plated matt  
blasted/brushed



04 | nickel-plated  
polished



05 | antique



06 | burnished



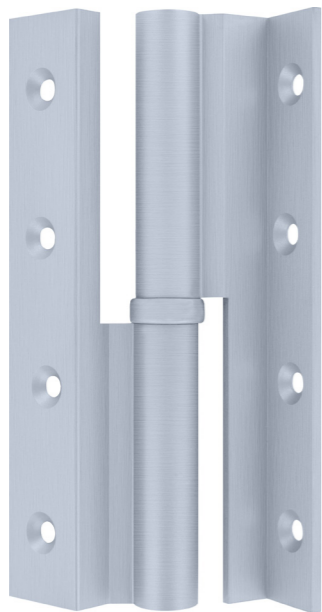
07 | tin-plated



08 | gold-plated



09 | chromium-plated  
polished



10 | chromium-plated  
matt  
blasted/brushed



11 | black



12 | white



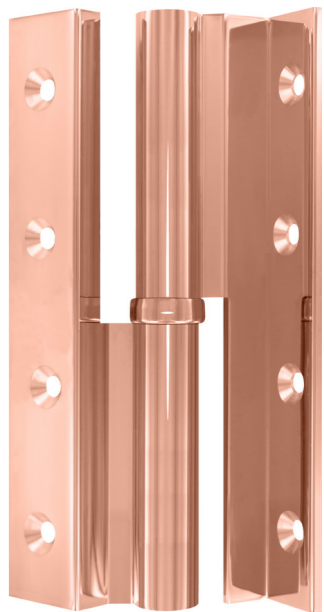
13 | tin 2.0



14 | nickel dark  
polished



15 | nickel dark  
matt  
blasted/brushed



16 | copper

All hinges can also be individually produced in two colours on request. Other combinations than shown are possible.

Bi-Color can also be manufactured in the colours of your door handle set.



black - brass polished



stainless steel finish - chromium-plated polished



tin 2.0 - nickel-plated polished



nickel dark polished - gold-plated



All Brass door lift-off hinges can be delivered with these final tips:



Nr.1 cylindrical



Nr.2 ZK 9a  
12 Ø + 15 Ø + 16 Ø



Nr.3 ZK 19  
10 Ø + 12 Ø + 15 Ø + 16 Ø



Nr.4 ZK 9  
15 Ø + 16 Ø



Nr.5 ZK A  
15 Ø



Nr.6 ZK B  
15 Ø + 16 Ø



Nr.7 ZK 7  
18 Ø



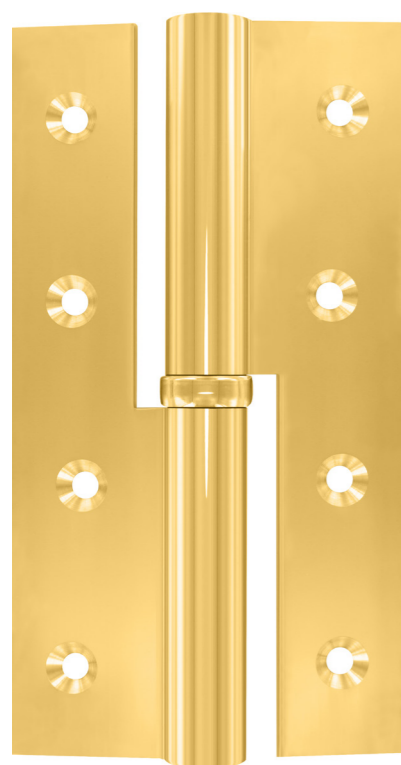
Nr.8 ZK E  
15 Ø + 16 Ø



Nr.9 ZK D  
12 Ø + 15 Ø

All hinges are also available with an extractor pin. Other final tips are available on request.





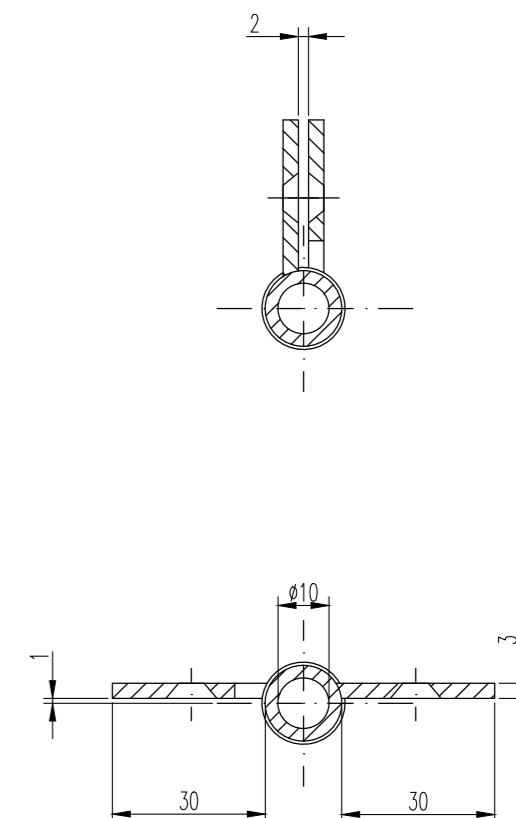
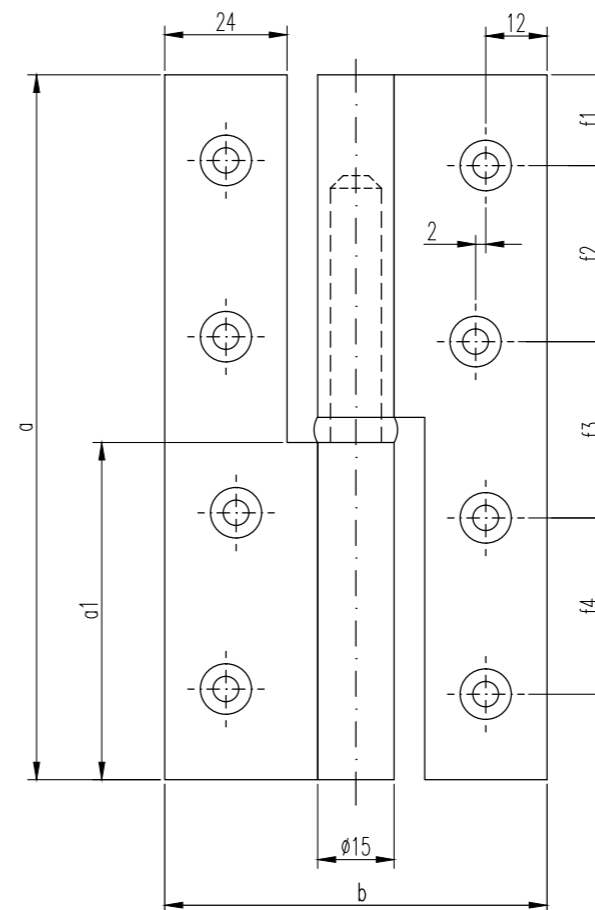
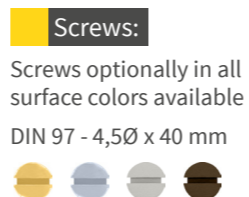
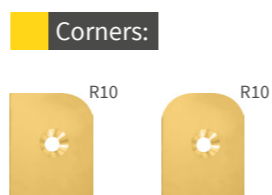
**Brass door lift-off hinge straight for blunt doors**

15 mm roll-Ø  
30 mm leaf width  
3,0 mm leaf thickness

Consisted of brass profile material  
· milled and drilled  
· with steel pin and ball bearing

Available final tips  
Nr. 1 | 2 | 3 | 4 | 5 | 6 | 8 | 9

It is also available in all RAL colors and in PVD coating and with rounded corners (radius 10 mm)



**Final tip:**



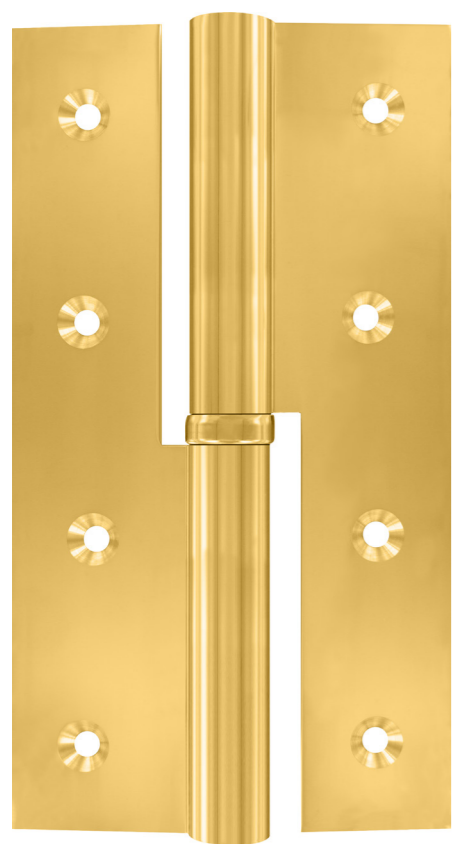
**Article number**

2					
<b>Version:</b>	<b>Lengths:</b>	<b>Surfaces:</b>	<b>Final tip:</b>	<b>DIN Version:</b>	<b>Corners:</b>
15 mm Ø 30 mm leaf width 3 mm leaf thickness	1. 80 mm 2. 90 mm 3. 100 mm 8. 120 mm 4. 140 mm 5. 160 mm	01. Brass polished 02. Brass matt blasted or brushed 03. nickel-plated matt blasted or brushed 04. nickel-plated polished 05. antique 06. burnished 07. tin-plated 08. gold-plated 09. chromium-plated polished 10. chromium-plated matt blasted or brushed 11. black 12. white 13. tin 2.0 14. nickel dark polished 15. nickel dark matt blasted or brushed 16. copper	1. cylindrical 2. ZK 9a 3. ZK 19 4. ZK 9 5. ZK A 6. ZK B 8. ZK E 9. ZK D	6. right 7. left	0. angular 4. four rounded corners 6. six rounded corners

**Values in millimeters**

capacity	with two hinges	30 kg	30 kg	30 kg	40 kg	50 kg	60 kg
	with three hinges	50 kg	50 kg	50 kg	60 kg	70 kg	80 kg
hinge length	a	80	90	100	120	140	160
flap	a1	37	42	47	57	67	77
opened width	b	75	75	75	75	75	75
roll-Ø		15	15	15	15	15	15
pin-Ø		10	10	10	10	10	10
leaf width from roll		30	30	30	30	30	30
ridge width		24	24	24	24	24	24
leaf thickness		3	3	3	3	3	3
number of screw holes		6	6	6	8	8	8
for countersunk wood screws by DIN 97 Ø		4,5	4,5	4,5	4,5	4,5	4,5
	f1	12	12	11,5	15	17,5	17,5
	f2	28	31	38,5	30	35	41
	f3	28	31	38,5	30	35	43
	f4	-	-	-	30	35	41





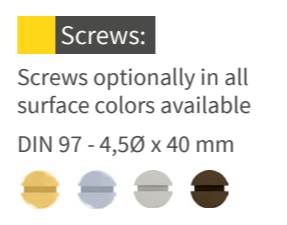
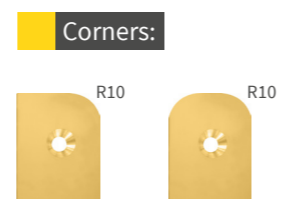
**Brass door lift-off hinge straight for blunt doors**

16 mm roll-Ø  
35 mm leaf width  
3,5 mm leaf thickness

Consisted of brass profile material  
· milled and drilled  
· with steel pin and ball bearing  
· with extraction pin available

Available final tips  
Nr. 1 | 2 | 3 | 4 | 6 | 8

It is also available in all RAL colors and in PVD coating and with rounded corners (radius 10 mm)

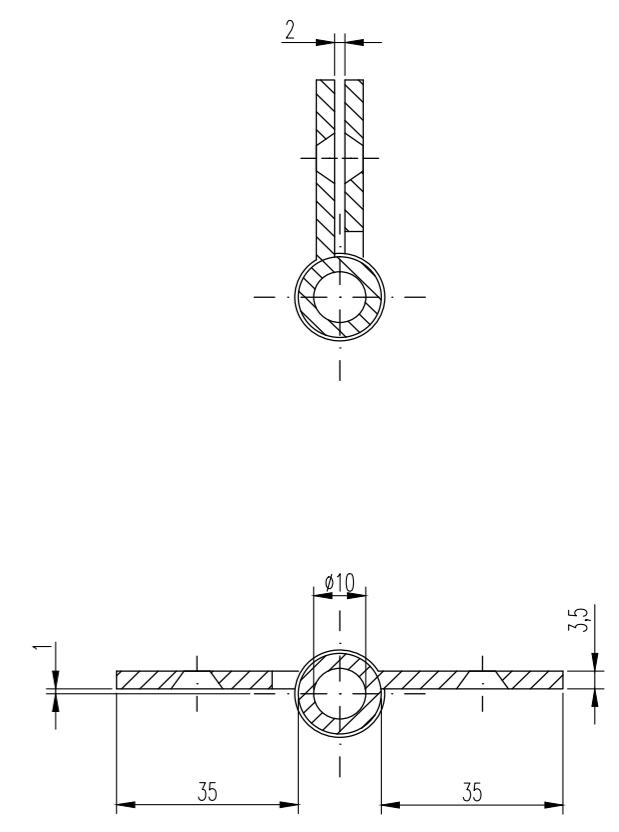
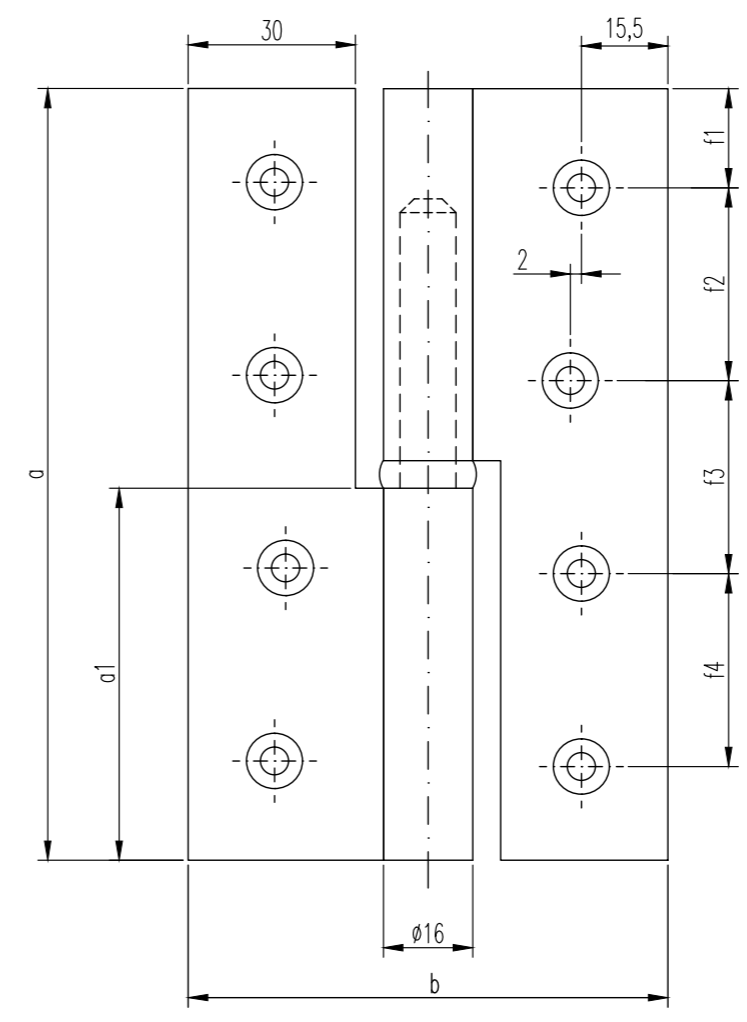


**Final tip:**



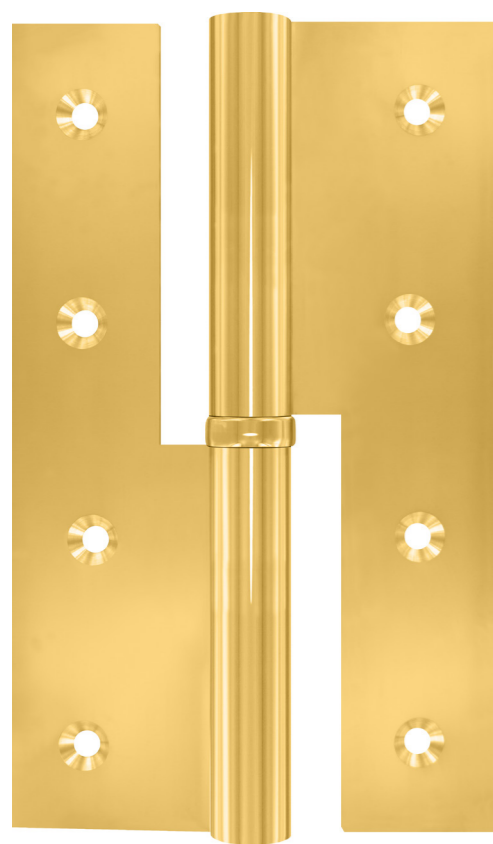
**Article number**

<b>5</b>					
<b>Version:</b>	<b>Lengths:</b>	<b>Surfaces:</b>	<b>Final tip:</b>	<b>DIN Version:</b>	<b>Corners:</b>
16 mm Ø 35 mm leaf width 3,5 mm leaf thickness	3. 100 mm 8. 120 mm 4. 140 mm 5. 160 mm 6. 180 mm 7. 200 mm	01. Brass polished 02. Brass matt blasted or brushed 03. nickel-plated matt blasted or brushed 04. nickel-plated polished 05. antique 06. burnished 07. tin-plated 08. gold-plated 09. chromium-plated polished 10. chromium-plated matt blasted or brushed 11. black 12. white 13. tin 2.0 14. nickel dark polished 15. nickel dark matt blasted or brushed 16. copper	1. cylindrical 2. ZK 9a 3. ZK 19 4. ZK 9 6. ZK B 8. ZK E	6. right 7. left	0. angular 4. four rounded corners 6. six rounded corners



**Values in millimeters**

capacity	with two hinges	40 kg	50 kg	60 kg	70 kg	80 kg	90 kg
	with three hinges	60 kg	70 kg	80 kg	90 kg	110kg	140kg
hinge length	a	100	120	140	160	180	200
flap	a1	47	57	67	77	87	97
opened width	b	86	86	86	86	86	86
roll-Ø		16	16	16	16	16	16
pin-Ø		10	10	10	10	10	10
leaf width from roll		35	35	35	35	35	35
ridge width		30	30	30	30	30	30
leaf thickness		3,5	3,5	3,5	3,5	3,5	3,5
number of screw holes		6	8	8	8	10	10
for countersunk wood screws by DIN 97 Ø		4,5	4,5	4,5	4,5	4,5	4,5
f1	11,5	15	17,5	17,5	19	25	
f2	38,5	30	35	41	35	40	
f3	38,5	30	35	43	36	35	
f4	-	30	35	41	36	35	
f5	-	-	-	-	35	40	



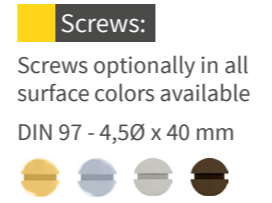
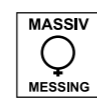
### Brass door lift-off hinge straight for blunt doors

16 mm roll-Ø  
40 mm leaf width  
3,5 mm leaf thickness

Consisted of brass profile material  
· milled and drilled  
· with steel pin and ball bearing  
· with extraction pin available

Available final tips  
Nr. 1 | 2 | 3 | 4 | 6 | 8

It is also available in all RAL colors and in PVD coating and with rounded corners (radius 10 mm)



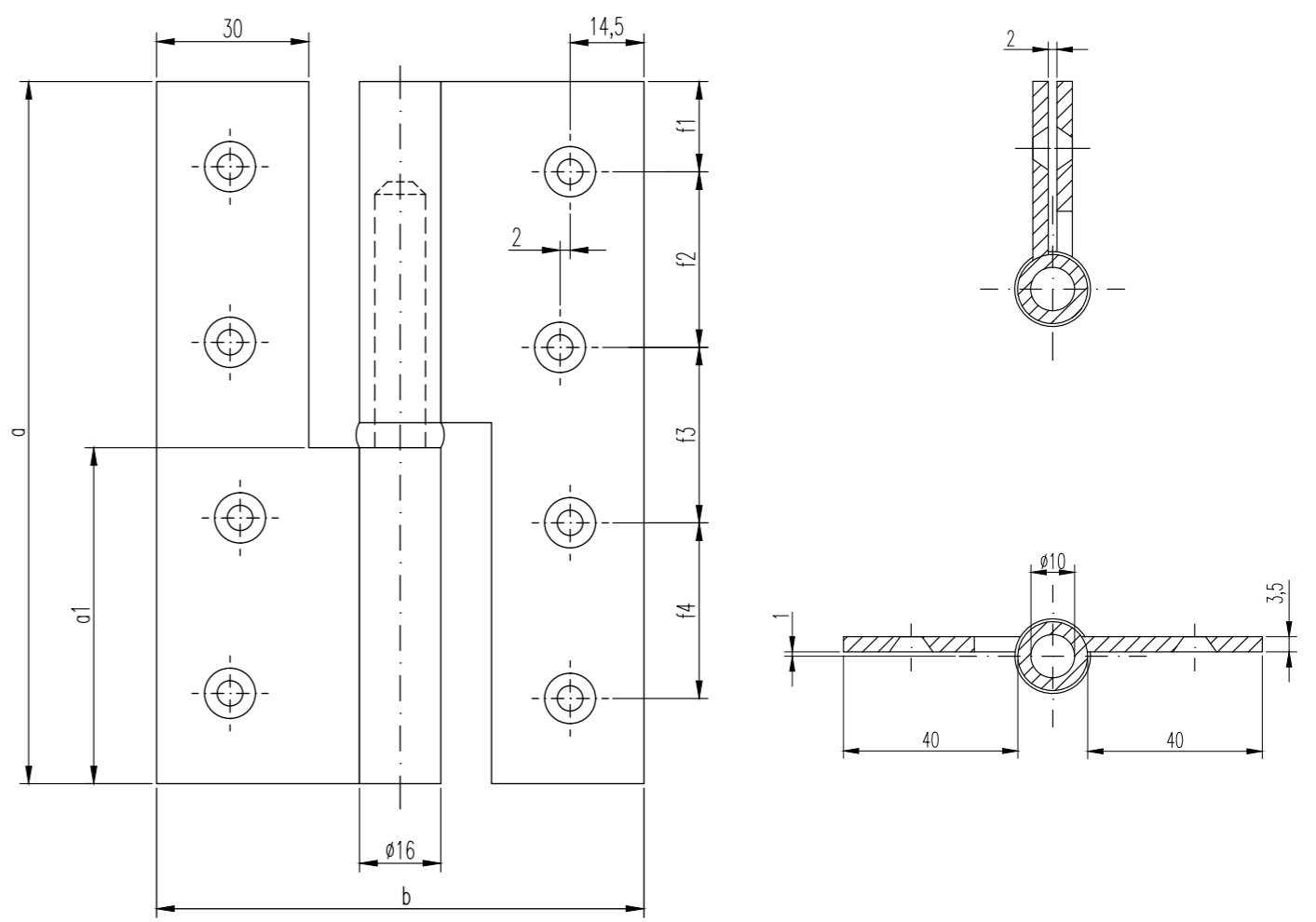
#### Final tip:



#### Article number

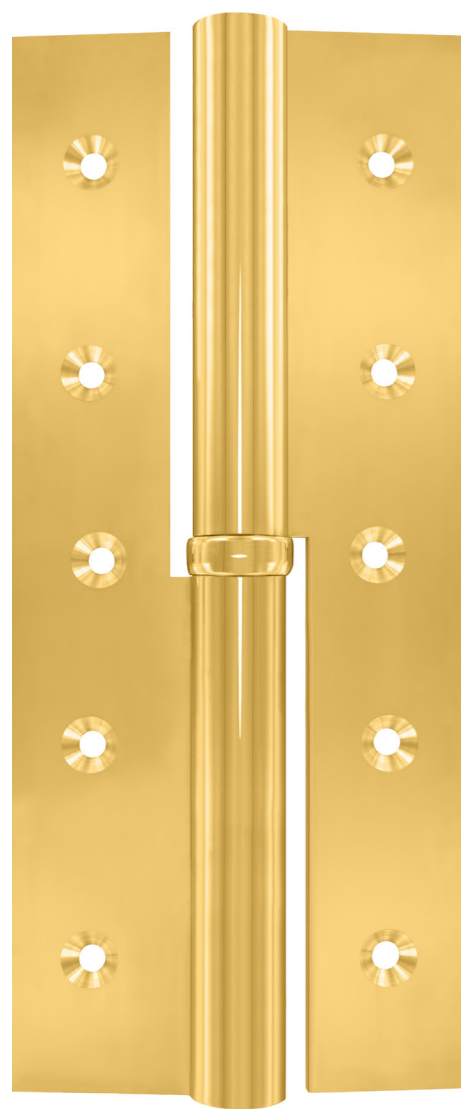


- Version:** 16 mm Ø, 40 mm leaf width, 3,5 mm leaf thickness
- Lengths:** 4. 140 mm, 5. 160 mm, 6. 180 mm, 7. 200 mm
- Surfaces:** 01. Brass polished, 02. Brass matt blasted or brushed, 03. nickel-plated matt blasted or brushed, 04. nickel-plated polished, 05. antique, 06. burnished, 07. tin-plated, 08. gold-plated, 09. chromium-plated polished, 10. chromium-plated matt blasted or brushed, 11. black, 12. white, 13. tin 2.0, 14. nickel dark polished, 15. nickel dark matt blasted or brushed, 16. copper
- Final tip:** 1. cylindrical, 2. ZK 9a h: 11 mm, 3. ZK 19 h: 31 mm, 4. ZK 9 h: 5 mm, 6. ZK B h: 37 mm, 8. ZK E h: 23 mm
- DIN Version:** 6. right, 7. left
- Corners:** 0. angular, 4. four rounded corners, 6. six rounded corners



#### Values in millimeters

capacity	with two hinges	60 kg	70 kg	80 kg	90 kg
	with three hinges	80 kg	90 kg	110 kg	140 kg
hinge length	a	140	160	180	200
flap	a1	67	77	87	97
opened width	b	96	96	96	96
roll-Ø		16	16	16	16
pin-Ø		10	10	10	10
leaf width from roll		40	40	40	40
ridge width		30	30	30	30
leaf thickness		3,5	3,5	3,5	3,5
number of screw holes		8	8	10	10
for countersunk wood screws by DIN 97 Ø		4,5	4,5	4,5	4,5
	f1	17,5	17,5	19	25
	f2	35	41	35	40
	f3	35	43	36	35
	f4	35	41	36	35
	f5	-	-	35	40



### Brass door lift-off hinge straight for blunt doors

18 mm roll-Ø  
34 mm leaf width  
5,0 mm leaf thickness

Consisted of brass profile material  
· milled and drilled  
· with steel pin and ball bearing

Available final tips  
Nr. 1 | 7

It is also available in all RAL colors and in PVD coating and with rounded corners (radius 10 mm)



#### Corners:



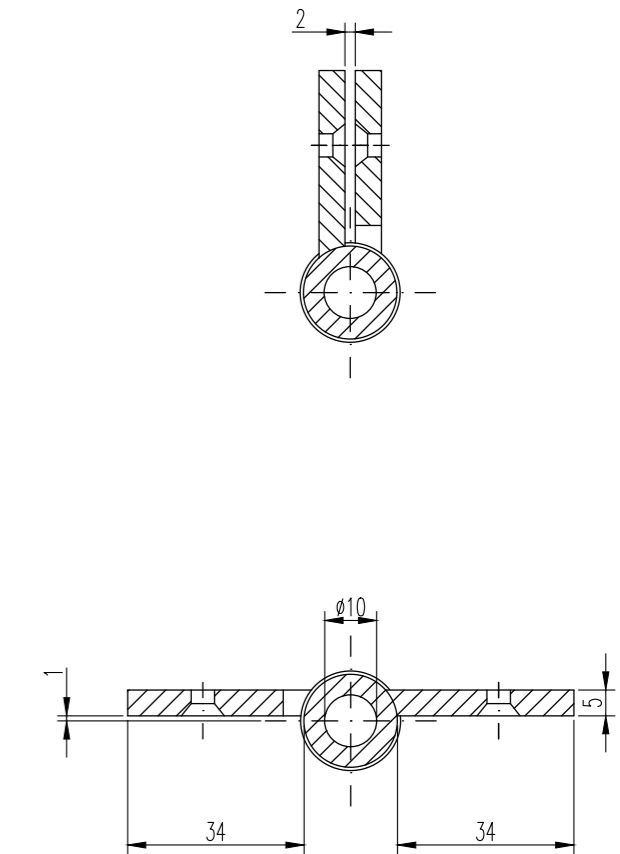
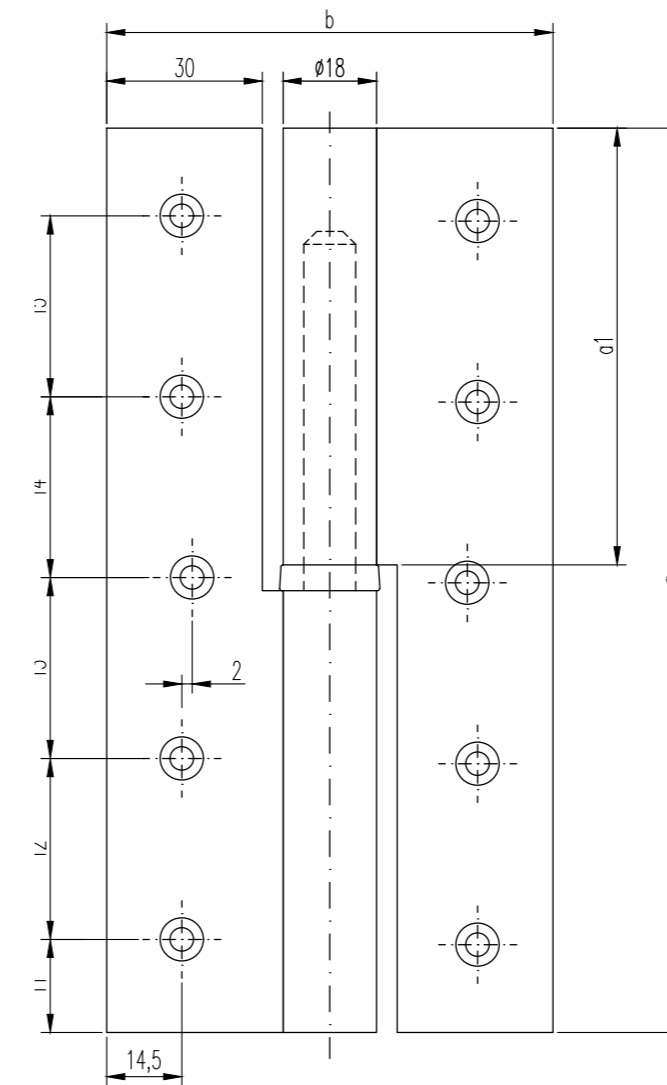
#### Screws:

Screws optionally in all surface colors available

DIN 97 - 4,5Ø x 40 mm



#### Final tip:



### Article number

18

#### Version:

18 mm Ø  
34 mm leaf width  
5 mm leaf thickness

#### Lengths:

- 4. 140 mm
- 5. 160 mm
- 6. 180 mm
- 7. 200 mm

#### Surfaces:

- 01. Brass polished
- 02. Brass matt blasted or brushed
- 03. nickel-plated matt blasted or brushed
- 04. nickel-plated polished
- 05. antique
- 06. burnished
- 07. tin-plated
- 08. gold-plated
- 09. chromium-plated polished
- 10. chromium-plated matt blasted or brushed
- 11. black
- 12. white
- 13. tin 2.0
- 14. nickel dark polished
- 15. nickel dark matt blasted or brushed
- 16. copper

#### Final tip:

- 1. cylindrical
  - 7. ZK 7
- different final tips upon request available

#### DIN Version:

- 6. right
- 7. left

#### Corners:

- 0. angular
- 4. four rounded corners
- 6. six rounded corners

### Values in millimeters

capacity	with two hinges	80 kg	100 kg	130 kg	150 kg
	with three hinges	110 kg	130 kg	160 kg	200 kg
hinge length	a	140	160	180	200
flap	a1	67	77	87	97
opened width	b	86	86	86	86
roll-Ø		18	18	18	18
pin-Ø		11	11	11	11
leaf width from roll		34	34	34	34
ridge width		30	30	30	30
leaf thickness		5	5	5	5
number of screw holes		8	8	10	10
for countersunk wood screws by DIN 97 Ø		4,5	4,5	4,5	4,5
f1	17,5	17,5	19	25	
f2	35	41	35	40	
f3	35	43	36	35	
f4	35	41	36	35	
f5	-	-	35	40	



**Door butt hinge 400-91**  
15 Ø 30,0 mm leaf width



15 mm roll-Ø  
30,0 mm leaf width  
3,0 mm leaf thickness

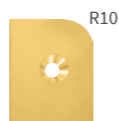
16 mm roll-Ø  
35,0 mm bis 40,0 mm leaf width  
3,5 mm leaf thickness

Consisted of brass profile material  
· milled and drilled  
· with ball bearing

Available final tips  
Nr. 2 | 3 | 4 | 5 | 6 | 8 | 9

Available with PVD-coating and rounded corners  
(radius 10 mm)

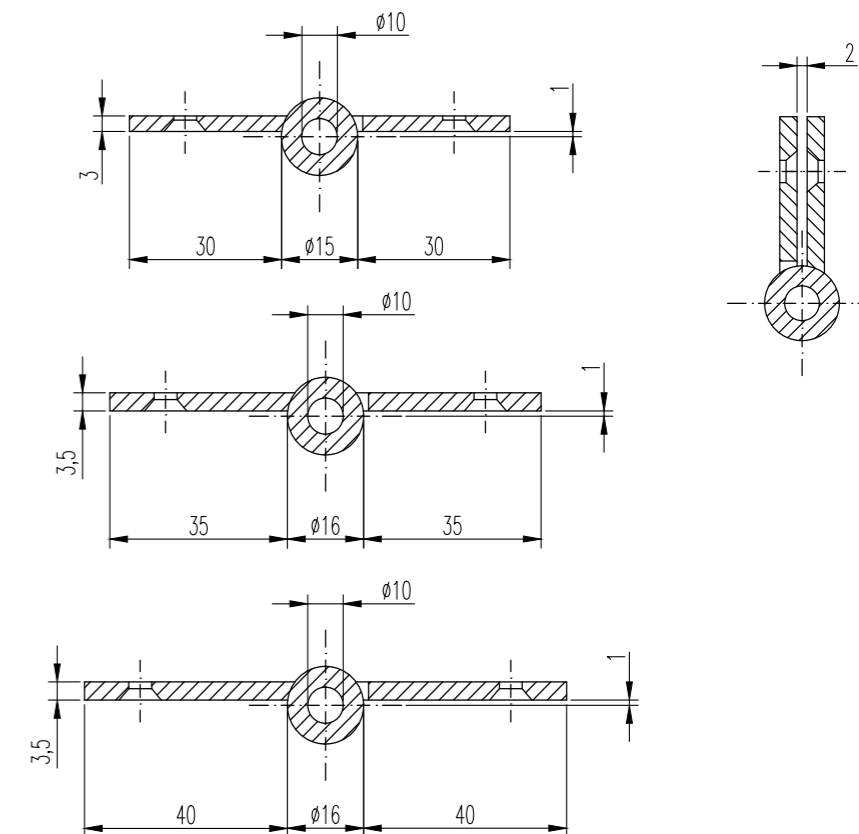
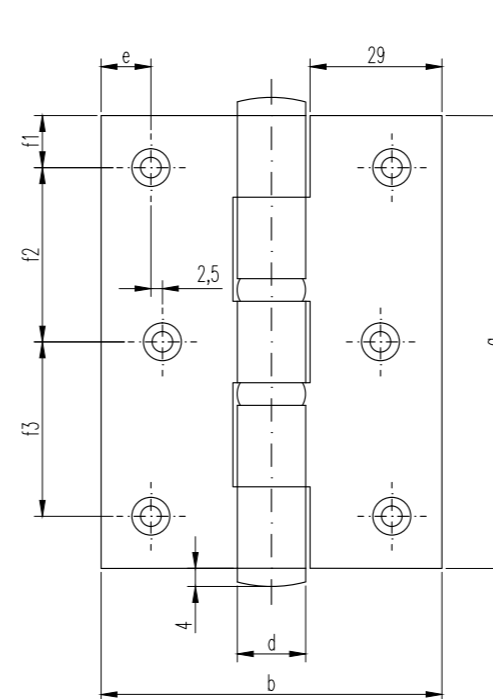
**Corners:**



**Screws:**

Screws optionally in all surface colors available

DIN 97 - 4,5Ø x 40 mm



**Final tip:**



**Article number**



**Version:**

- 23. 100 mm, 30 mm leaf width, 3,0 mm leaf thickness, 15 Ø
- 28. 120 mm, 30 mm leaf width, 3,0 mm leaf thickness, 15 Ø
- 13. 100 mm, 35 mm leaf width, 3,5 mm leaf thickness, 16 Ø
- 18. 120 mm, 35 mm leaf width, 3,5 mm leaf thickness, 16 Ø
- 93. 100 mm, 40 mm leaf width, 3,5 mm leaf thickness, 16 Ø
- 98. 120 mm, 40 mm leaf width, 3,5 mm leaf thickness, 16 Ø



**Surfaces:**

- 01. Brass polished
- 02. Brass matt
- 03. nickel-plated matt
- 04. nickel-plated polished
- 05. antique
- 06. burnished
- 07. tin-plated
- 08. gold-plated
- 09. chromium-plated polished
- 10. chromium-plated matt
- 13. tin 2.0
- 14. nickel dark polished
- 15. nickel dark matt
- 16. copper



**Final tip:**

- 2. ZK 9a
- 3. ZK 19
- 4. ZK 9
- 6. ZK B
- 8. ZK E
- Zusätzlich bei 15 Ø
- 5. ZK A
- 9. ZK D



**Corners:**

- 0. angular
- 4. four rounded corners

**Values in millimeters**

capacity	40 kg	50 kg	55 kg	60 kg	65 kg	70 kg
size a x b	100 x 75	120 x 75	100 x 86	120 x 86	100 x 96	120 x 96
d	15	15	16	16	16	16
e	11	11	15,5	15,5	15,5	15,5
number of holes	6	8	8	8	8	8
for countersunk wood screws						
by DIN 97	4,5	4,5	4,5	4,5	4,5	4,5
f1	11,5	14,5	11,5	14,5	11,5	14,5
f2	38,5	30	38,5	30	38,5	30
f3	38,5	30	38,5	30	38,5	30
f4	-	30	-	30	-	30



**Brass door lift-off hinge cranking D13 for rebated doors**

15 mm roll-Ø  
3,0 mm leaf thickness

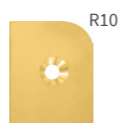
Consisted of brass profile material  
· milled and drilled  
· with steel pin and ball bearing

Available final tips  
Nr. 1 | 2 | 3 | 4 | 5 | 6 | 8 | 9

It is also available in all RAL colors and in PVD coating and with rounded corners (radius 10 mm)



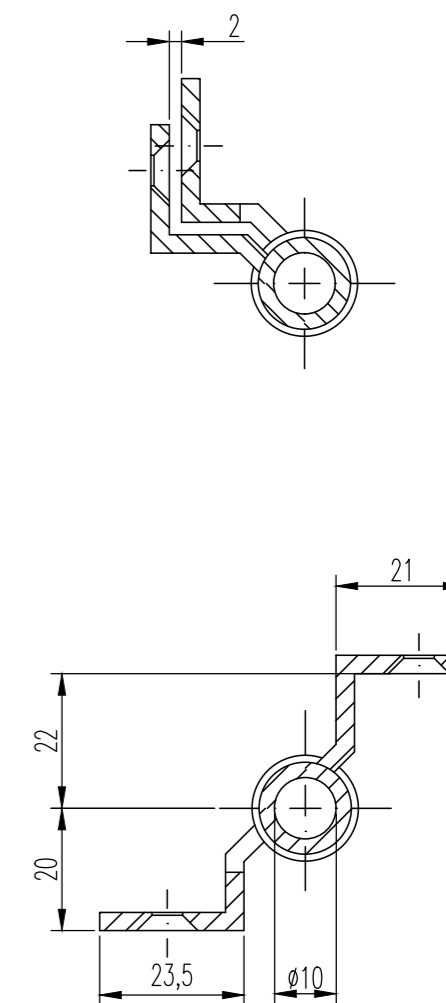
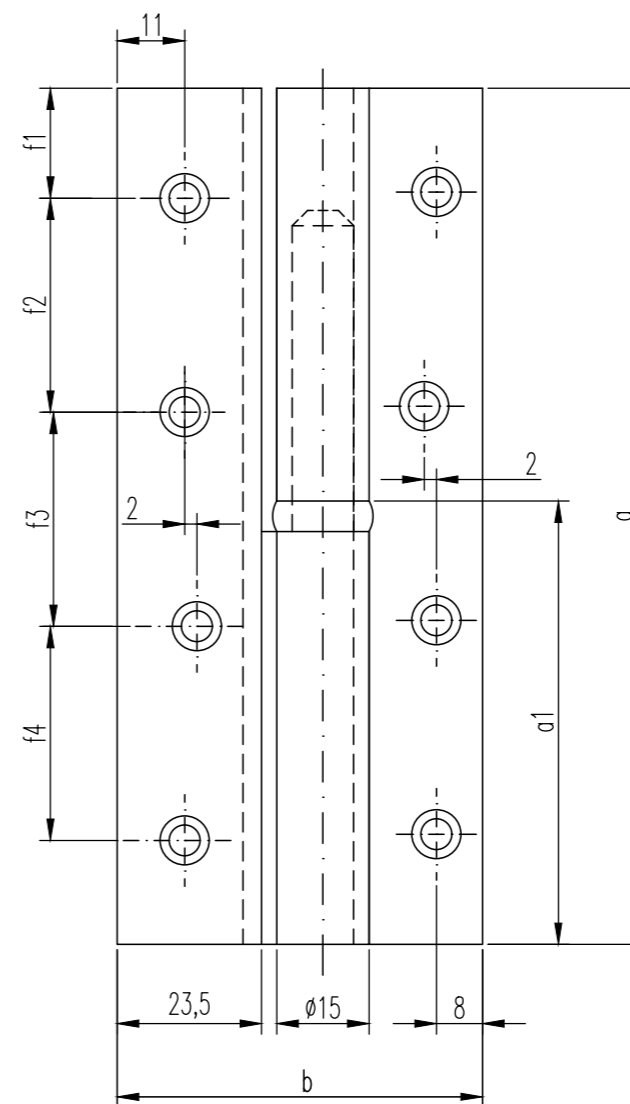
**Corners:**



**Screws:**

Screws optionally in all surface colors available

DIN 97 - 4,5Ø x 40 mm



**Final tip:**



- 1. cylindrical
- 2. ZK 9a h: 11 mm
- 3. ZK 19 h: 31 mm
- 4. ZK 9 h: 5 mm
- 5. ZK A h: 28 mm
- 6. ZK B h: 37 mm
- 8. ZK E h: 23 mm
- 9. ZK D h: 13 mm

**Article number**

<b>3</b>					
<b>Version:</b>	<b>Lengths:</b>	<b>Surfaces:</b>	<b>Final tip:</b>	<b>DIN Version:</b>	<b>Corners:</b>
15 mm Ø 3 mm leaf thickness	3. 100 mm 8. 120 mm 4. 140 mm 5. 160 mm	01. Brass polished 02. Brass matt blasted or brushed 03. nickel-plated matt blasted or brushed 04. nickel-plated polished 05. antique 06. burnished 07. tin-plated 08. gold-plated 09. chromium-plated polished 10. chromium-plated matt blasted or brushed 11. black 12. white 13. tin 2.0 14. nickel dark polished 15. nickel dark matt blasted or brushed 16. copper	1. cylindrical 2. ZK 9a 3. ZK 19 4. ZK 9 5. ZK A 6. ZK B 8. ZK E 9. ZK D	6. right 7. left	0. angular 4. four rounded corners

**Values in millimeters**

capacity	with two hinges	30 kg	40 kg	50 kg	60 kg
	with three hinges	50 kg	60 kg	70 kg	80 kg
hinge length	a	100	120	140	160
flap	a1	47	57	67	77
opened width	b	60,5	60,5	60,5	60,5
roll-Ø		15	15	15	15
pin-Ø		10	10	10	10
leaf width / flap		23,5	23,5	23,5	23,5
outer post for door leaf width		21	21	21	21
leaf thickness		3	3	3	3
number of screw holes		6	8	8	8
for countersunk wood screws by DIN 97 Ø		4,5	4,5	4,5	4,5
f1	11,5	15	17,5	17,5	
f2	38,5	30	35	41	
f3	38,5	30	35	43	
f4	-	30	35	41	



**Brass door lift-off hinge cranking D13 for rebated doors**

16 mm roll-Ø  
3,5 mm leaf thickness

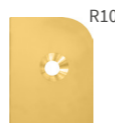
Consisted of brass profile material  
· milled and drilled  
· with steel pin and ball bearing  
· with extraction pin available

Available final tips  
Nr. 1 | 2 | 3 | 4 | 6 | 8

It is also available in all RAL colors and in PVD coating and with rounded corners (radius 10 mm)



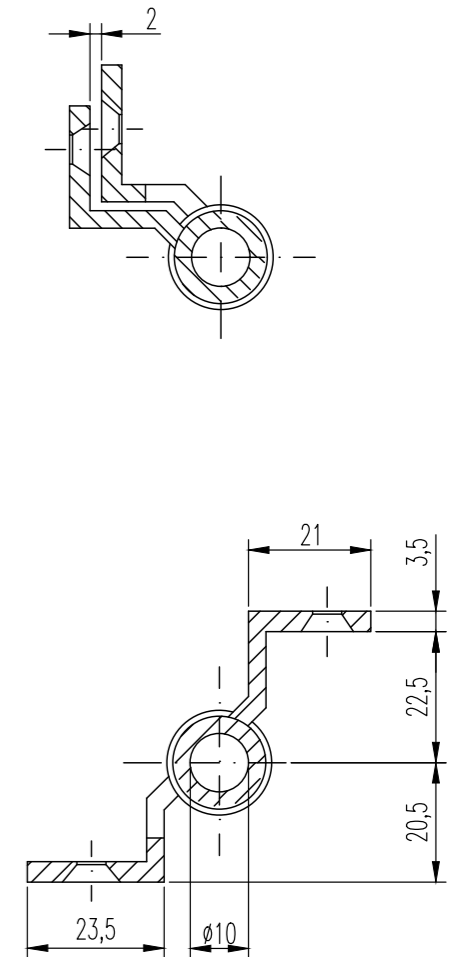
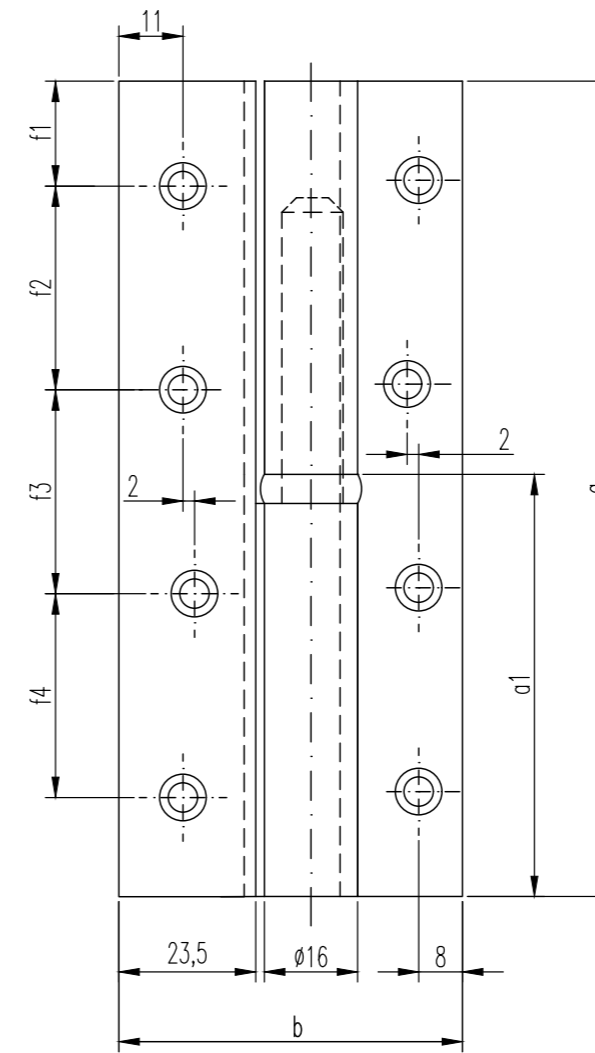
**Corners:**



**Screws:**

Screws optionally in all surface colors available

DIN 97 - 4,5Ø x 40 mm



**Final tip:**



**Article number**

<b>6</b>					
<b>Version:</b>	<b>Lengths:</b>	<b>Surfaces:</b>	<b>Final tip:</b>	<b>DIN Version:</b>	<b>Corners:</b>
16 mm Ø 3,5 mm leaf thickness	3. 100 mm 8. 120 mm 4. 140 mm 5. 160 mm 6. 180 mm 7. 200 mm	01. Brass polished 02. Brass matt blasted or brushed 03. nickel-plated matt blasted or brushed 04. nickel-plated polished 05. antique 06. burnished 07. tin-plated 08. gold-plated 09. chromium-plated polished 10. chromium-plated matt blasted or brushed 11. black 12. white 13. tin 2.0 14. nickel dark polished 15. nickel dark matt blasted or brushed 16. copper	1. cylindrical 2. ZK 9a 3. ZK 19 4. ZK 9 6. ZK B 8. ZK E	6. right 7. left	0. angular 4. four rounded corners

**Values in millimeters**

capacity	with two hinges	40 kg	50 kg	60 kg	70 kg	80 kg	90 kg
	with three hinges	60 kg	70 kg	80 kg	90 kg	110 kg	140 kg
hinge length	a	100	120	140	160	180	200
flap	a1	47	57	67	77	87	87
opened width	b	61	61	61	61	61	61
roll-Ø		16	16	16	16	16	16
pin-Ø		10	10	10	10	10	10
leaf width / flap		23,5	23,5	23,5	23,5	23,5	23,5
outer post for door leaf width		21	21	21	21	21	21
leaf thickness		3,5	3,5	3,5	3,5	3,5	3,5
number of screw holes		6	8	8	8	10	10
for countersunk wood screws by DIN 97 Ø		4,5	4,5	4,5	4,5	4,5	4,5
f1		11,5	15	17,5	17,5	19	25
f2		38,5	30	35	41	35	40
f3		38,5	30	35	43	36	35
f4		-	30	35	41	36	35
f5		-	-	-	-	35	40



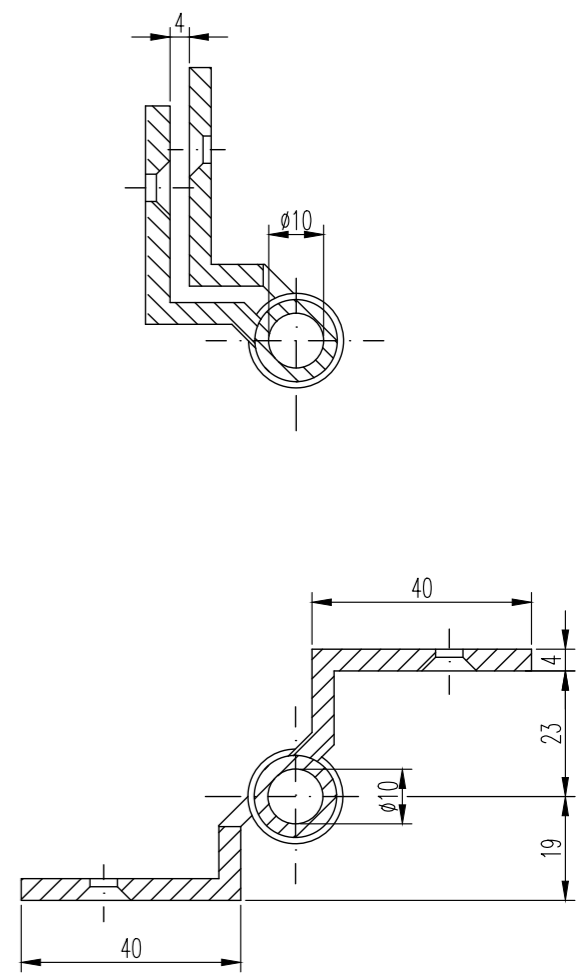
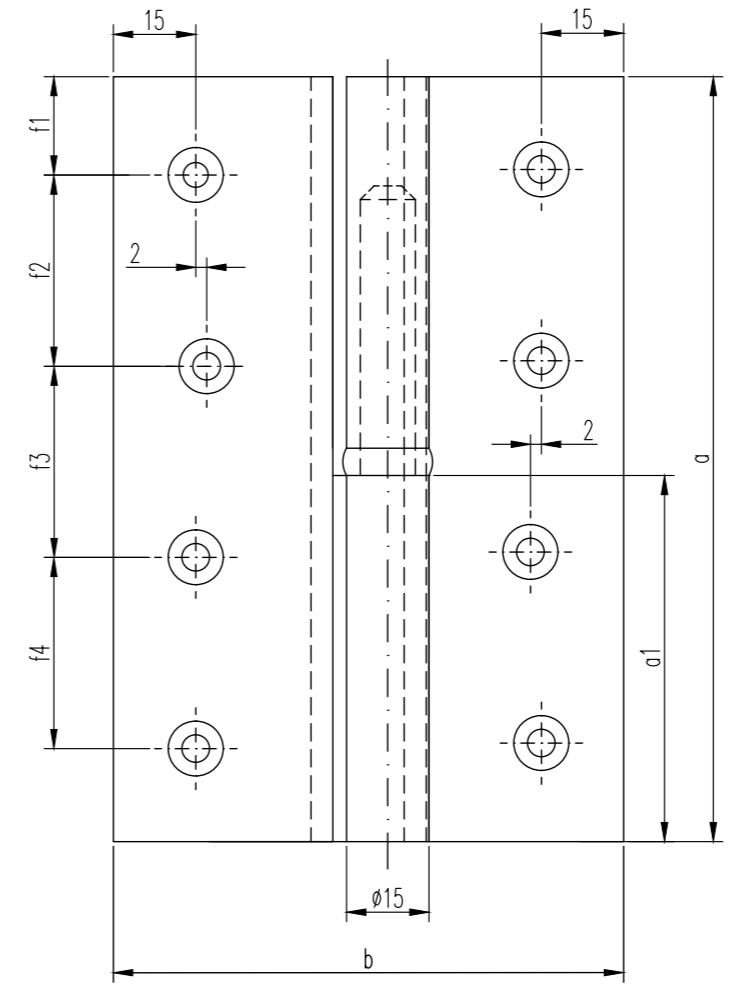
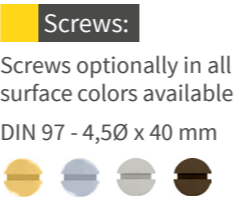
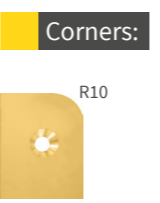
**Brass door lift-off hinge cranking D14 for rebated doors**

15 mm roll-Ø  
4,0 mm leaf thickness

Consisted of brass profile material  
· milled and drilled  
· with steel pin and ball bearing

Available final tips  
Nr. 1 | 2 | 3 | 4 | 5 | 6 | 8 | 9

It is also available in all RAL colors and in PVD coating and with rounded corners (radius 10 mm)



**Final tip:**



**Article number**

7					
<b>Version:</b>	<b>Lengths:</b>	<b>Surfaces:</b>	<b>Final tip:</b>	<b>DIN Version:</b>	<b>Corners:</b>
15 mm Ø 4 mm leaf thickness	4. 140 mm 5. 160 mm 6. 180 mm 7. 200 mm	01. Brass polished 02. Brass matt blasted or brushed 03. nickel-plated matt blasted or brushed 04. nickel-plated polished 05. antique 06. burnished 07. tin-plated 08. gold-plated 09. chromium-plated polished 10. chromium-plated matt blasted or brushed 11. black 12. white 13. tin 2.0 14. nickel dark polished 15. nickel dark matt blasted or brushed 16. copper	1. cylindrical 2. ZK 9a 3. ZK 19 4. ZK 9 5. ZK A 6. ZK B 8. ZK E 9. ZK D	6. right 7. left	0. angular 4. four rounded corners

**Values in millimeters**

capacity	with two hinges	80 kg	100 kg	130 kg	150 kg
	with three hinges	100 kg	130 kg	160 kg	200 kg
hinge length	a	140	160	180	200
flap	a1	67	77	87	97
opened width	b	93	93	93	93
roll-Ø		15	15	15	15
pin-Ø		10	10	10	10
leaf width / flap		40	40	40	40
outer post for door leaf width		40	40	40	40
leaf thickness		4	4	4	4
number of screw holes		8	8	10	10
for countersunk wood screws by DIN 97 Ø		4,5	4,5	4,5	4,5
f1		17,5	17,5	19	25
f2		35	41	35	40
f3		35	43	36	35
f4		35	41	36	35
f5		-	-	35	40



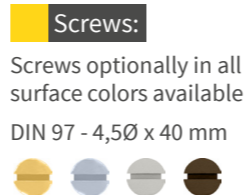
### Brass door lift-off hinge cranking B/C for recessed doors

16 mm roll-Ø  
35 mm leaf width,  
auch with 25 mm leaf width available  
3,5 mm leaf thickness

Consisted of brass profile material  
· milled and drilled  
· with steel pin and ball bearing  
· with extraction pin available

Available final tips  
Nr. 1 | 2 | 3 | 4 | 6 | 8

It is also available in all RAL colors and in PVD coating and with rounded corners (radius 10 mm)



#### Final tip:



1. cylindrical  
2. ZK 9a h: 11 mm  
3. ZK 19 h: 31 mm  
4. ZK 9 h: 5 mm  
6. ZK B h: 37 mm  
8. ZK E h: 23 mm

#### Article number



#### Version: Lengths: Surfaces: Final tip: DIN Version: Corners:

16 mm Ø  
35 mm leaf width  
3,5 mm leaf thickness

3. 100 mm  
8. 120 mm  
4. 140 mm  
5. 160 mm  
6. 180 mm  
7. 200 mm

01. Brass polished  
02. Brass matt blasted or brushed  
03. nickel-plated matt blasted or brushed  
04. nickel-plated polished  
05. antique  
06. burnished  
07. tin-plated  
08. gold-plated  
09. chromium-plated polished  
10. chromium-plated matt blasted or brushed  
11. black  
12. white  
13. tin 2.0  
14. nickel dark polished  
15. nickel dark matt blasted or brushed  
16. copper

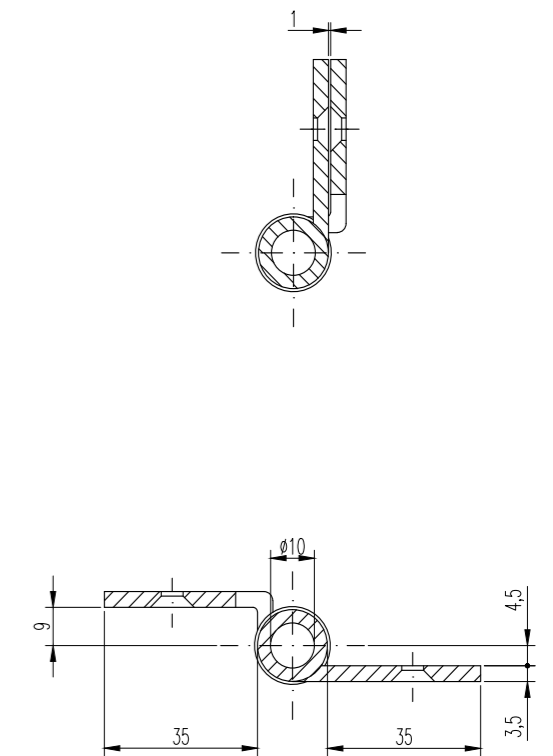
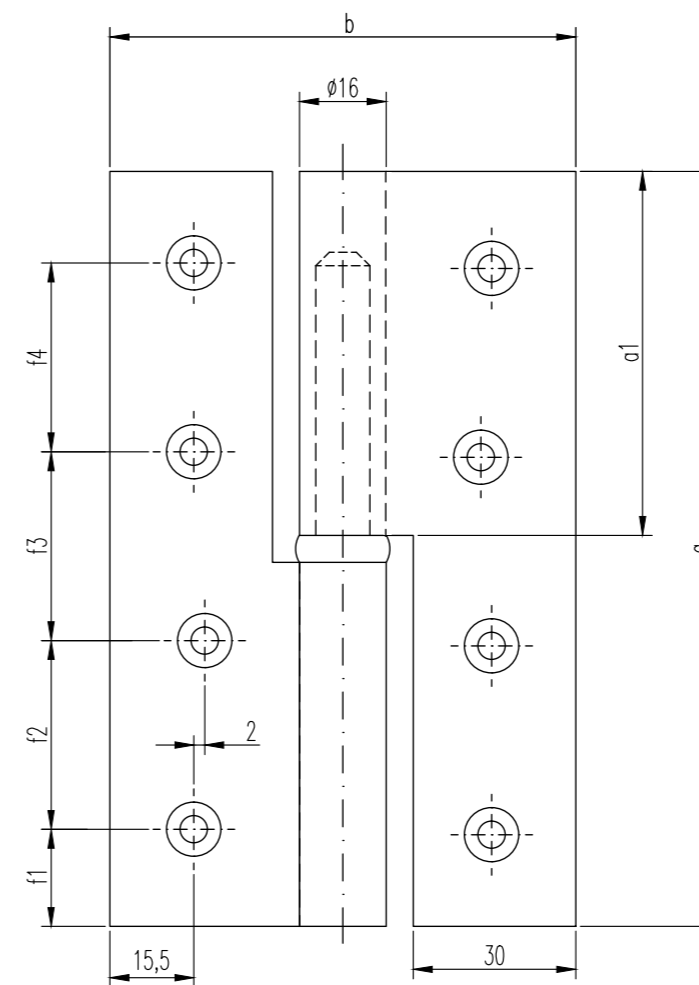
1. cylindrical  
2. ZK 9a  
3. ZK 19  
4. ZK 9  
6. ZK B  
8. ZK E

6. right  
7. left

0. angular  
4. four rounded corners  
6. six rounded corners

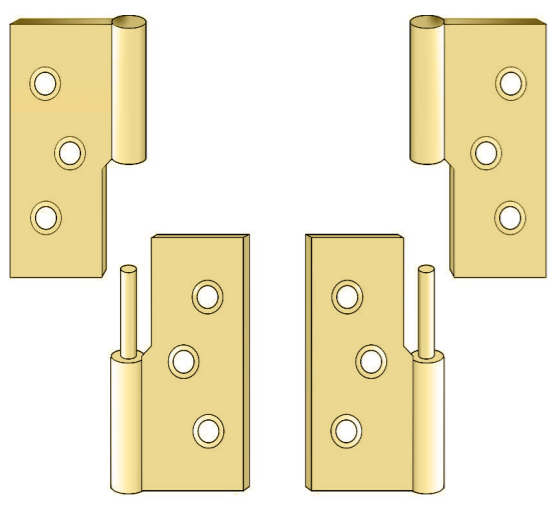
#### Values in millimeters

capacity	with two hinges	40 kg	50 kg	60 kg	70 kg	80 kg	90 kg
	with three hinges	60 kg	70 kg	80 kg	90 kg	110 kg	140 kg
hinge length	a	100	120	140	160	180	200
flap	a1	47	57	67	77	87	97
opened width	b	86	86	86	86	86	86
roll-Ø		16	16	16	16	16	16
pin-Ø		10	10	10	10	10	10
leaf width from roll		35	35	35	35	35	35
ridge width		30	30	30	30	30	30
leaf thickness		3,5	3,5	3,5	3,5	3,5	3,5
number of screw holes		6	8	8	8	10	10
for countersunk wood screws by DIN 97 Ø		4,5	4,5	4,5	4,5	4,5	4,5
f1		11,5	15	17,5	17,5	19	25
f2		38,5	30	35	41	35	40
f3		38,5	30	35	43	36	35
f4		-	30	35	41	36	35
f5		-	-	-	-	35	40





**Right- or left-hand hinge?**



**Crankings**

In order to see a difference in the hinges with screw-on flaps, the tapes must be looked at from the front against the side of the screw hole countersink when opened.

On a left hinge, the perforated flap (door flap) is on the left. With a right hinge, the perforated flap (door flap) is on the right.

**Number of the cabinet lift-off hinge per door**

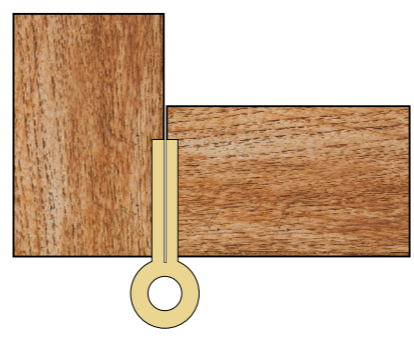
The number of hinges on a door depends on:

- door weight
- door size (height and width)
- door material



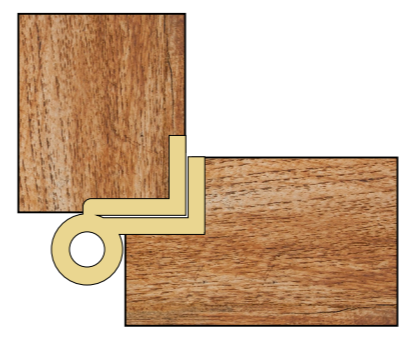
**Crankings**

We distinguish between four different crankings:



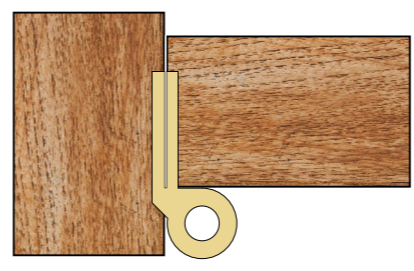
**cranking A, straight hinge**

- rabbet blunt-inset doors



**cranking D**

- rabbet for rebated doors



**cranking B/C**

- rabbet for recessed doors



**cranking L**

- rabbet for blunt overlay doors





**Brass cabinet lift-off hinge**  
straight for butt-inset (unrebated) doors



**Corners:**



**Screws:**

Screws optionally in all surface colors available  
DIN 97 3Ø x 20 mm

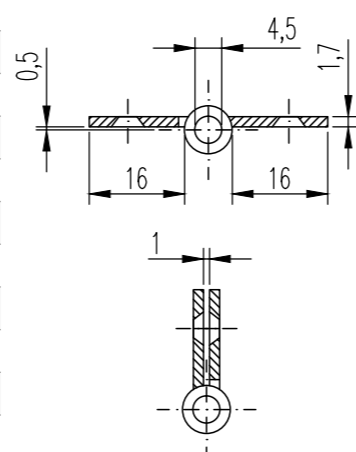
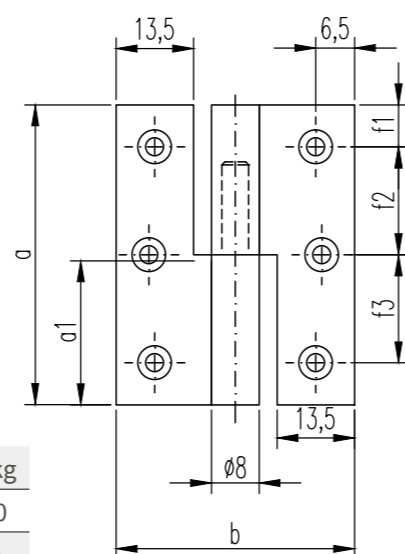
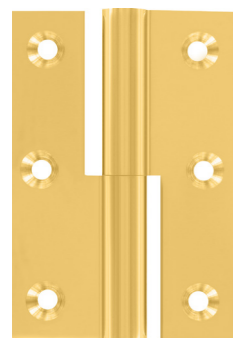


8 mm roll-Ø  
1,7 mm leaf thickness

- Consisted of brass profile material
- milled and drilled
- with steel pin
- without intermediate ring
- screws optional in all surfaces available

It is also available in all RAL colors and in PVD coating and with rounded corners (radius 5 mm), 40 mm and from 80 mm with intermediate ring

Packaging unit: 10 piece  
Low volume deliveries are possible



**Values in millimeters**

capacity with two hinges	10 kg	12 kg	14 kg	16 kg	18 kg	20 kg	
hinge length a	40	50	60	80	100	120	
flap a1	19	25	30	39	49	59	
opened width b	40	40	40	40	40	40	
roll-Ø	8	8	8	8	8	8	
pin-Ø	4,5	4,5	4,5	4,5	4,5	4,5	
leaf width from roll	16	16	16	16	16	16	
ridge width	13,5	13,5	13,5	13,5	13,5	13,5	
leaf thickness s	1,7	1,7	1,7	1,7	1,7	1,7	
number of screw holes	4	6	6	6	6	8	
for countersunk wood screws by DIN 97 Ø	3	3	3	3	3	3	
	f1	8	7	7	8	10	11
	f2	24	18	23	32	40	32
	f3	-	18	23	32	40	34

**Article number**

861

**Version:**

8 mm Ø straight

**Lengths:**

- 4. 40 mm
- 5. 50 mm
- 6. 60 mm
- 8. 80 mm
- 10. 100 mm
- 12. 120 mm

**Surfaces:**

- 01. Brass polished
- 02. Brass matt blasted/brushed
- 03. nickel-plated matt blasted/brushed
- 04. nickel-plated polished
- 05. antique
- 06. burnished
- 07. tin-plated
- 08. gold-plated
- 09. chromium-plated polished
- 10. chromium-plated matt blasted/brushed
- 11. black
- 12. white
- 13. tin 2.0
- 14. nickel dark polished
- 15. nickel dark matt blasted/brushed
- 16. copper

**DIN Version:**

- 6. right
- 7. left

**Corners:**

- 0. angular
- 4. four rounded corners

**Brass decorative cabinet lift-off hinge**  
straight for butt-inset (unrebated) doors



**Corners:**



**Screws:**

Screws optionally in all surface colors available  
DIN 97 3Ø x 20 mm

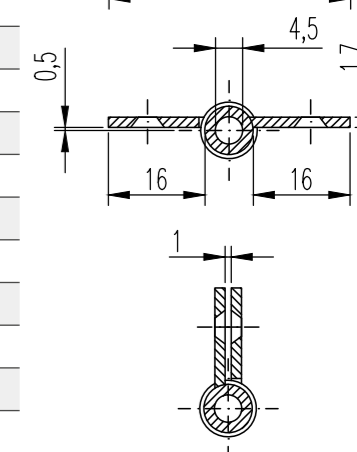
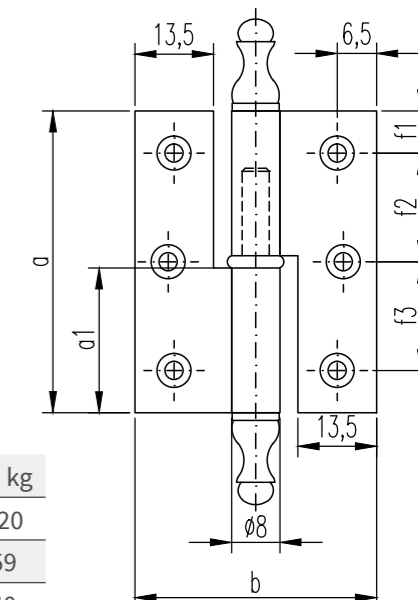


8 mm roll-Ø  
1,7 mm leaf thickness

- Consisted of brass profile material
- milled and drilled
- with steel pin
- intermediate ring
- final tip ZK 19 Height: 15 mm
- screws optional in all surfaces available

It is also available in all RAL colors and in PVD coating and with rounded corners (radius 5 mm)

Packaging unit: 10 piece  
Low volume deliveries are possible



**Values in millimeters**

capacity with two hinges	10 kg	12 kg	14 kg	16 kg	18 kg	20 kg	
hinge length a	40	50	60	80	100	120	
flap a1	19	24	29	39	49	59	
opened width b	40	40	40	40	40	40	
roll-Ø	8	8	8	8	8	8	
pin-Ø	4,5	4,5	4,5	4,5	4,5	4,5	
leaf width from roll	16	16	16	16	16	16	
ridge width	13,5	13,5	13,5	13,5	13,5	13,5	
leaf thickness s	1,7	1,7	1,7	1,7	1,7	1,7	
number of screw holes	4	6	6	6	6	8	
for countersunk wood screws by DIN 97 Ø	3	3	3	3	3	3	
	f1	8	7	7	8	10	11
	f2	24	18	23	32	40	32
	f3	-	-	23	32	40	34

**Article number**

851

**Version:**

8 mm Ø straight

**Lengths:**

- 4. 40 mm
- 5. 50 mm
- 6. 60 mm
- 8. 80 mm
- 10. 100 mm
- 12. 120 mm

**Surfaces:**

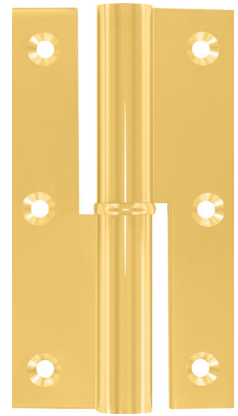
- 01. Brass polished
- 02. Brass matt blasted/brushed
- 03. nickel-plated matt blasted/brushed
- 04. nickel-plated polished
- 05. antique
- 06. burnished
- 07. tin-plated
- 08. gold-plated
- 09. chromium-plated polished
- 10. chromium-plated matt blasted/brushed
- 11. black
- 12. white
- 13. tin 2.0
- 14. nickel dark polished
- 15. nickel dark matt blasted/brushed
- 16. copper

**DIN Version:**

- 6. right
- 7. left

**Corners:**

- 0. angular
- 4. four rounded corners



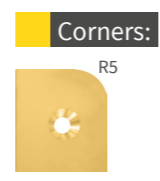
**Brass cabinet lift-off hinge**  
straight for butt-inset (unrebated) doors

11 mm roll-Ø  
2 mm leaf thickness

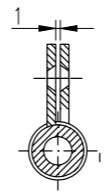
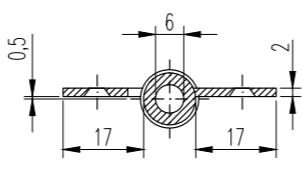
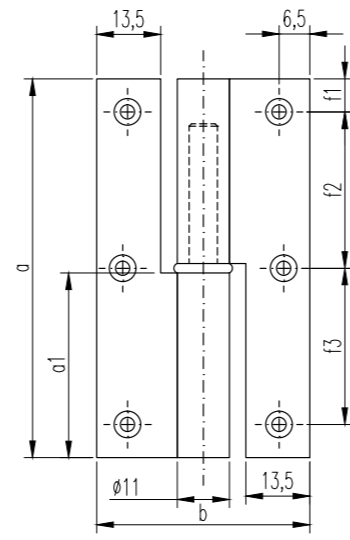
- Consisted of brass profile material
- milled and drilled
- with steel pin
- intermediate ring
- screws optional in all surfaces available

It is also available in all RAL colors and in PVD coating and with rounded corners (radius 5 mm), 40 mm and from 80 mm with intermediate ring

Packaging unit: 10 piece  
Low volume deliveries are possible



**Screws:**  
Screws optionally in all surface colors available  
DIN 97 3Ø x 20 mm



**Values in millimeters**

capacity with two hinges	15 kg	17 kg	19 kg	22 kg	25 kg	
hinge length a	50	60	80	100	120	
flap a1	24	29	39	49	59	
opened width b	45	45	45	45	45	
roll-Ø	11	11	11	11	11	
pin-Ø	6	6	6	6	6	
leaf width from roll	17	17	17	17	17	
ridge width	13,5	13,5	13,5	13,5	13,5	
leaf thickness s	2	2	2	2	2	
number of screw holes	6	6	6	6	8	
for countersunk wood screws by DIN 97 Ø	3	3	3	3	3	
	f1	7	7	8	10	11
	f2	18	23	32	40	32
	f3	18	23	32	40	34

**Article number**

**1161**

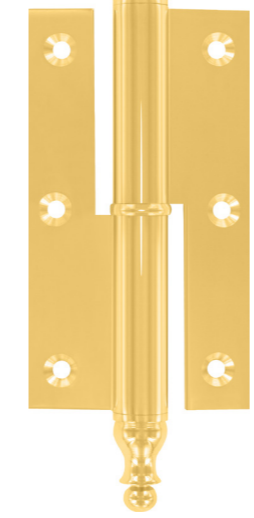
**Version:** 11 mm Ø straight

**Lengths:** 5. 50 mm, 6. 60 mm, 8. 80 mm, 10. 100 mm, 12. 120 mm

**Surfaces:** 01. Brass polished, 02. Brass matt blasted/brushed, 03. nickel-plated matt blasted/brushed, 04. nickel-plated polished, 05. antique, 06. burnished, 07. tin-plated, 08. gold-plated, 09. chromium-plated polished, 10. chromium-plated matt blasted/brushed, 11. black, 12. white, 13. tin 2.0, 14. nickel dark polished, 15. nickel dark matt blasted/brushed, 16. copper

**DIN Version:** 6. right, 7. left

**Corners:** 0. angular, 4. four rounded corners



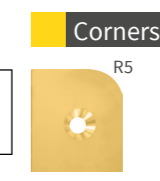
**Brass decorative cabinet lift-off hinge**  
straight for butt-inset (unrebated) doors

11 mm roll-Ø  
2 mm leaf thickness

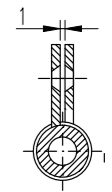
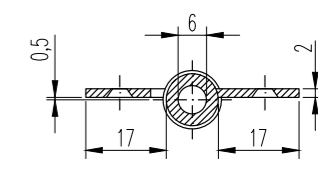
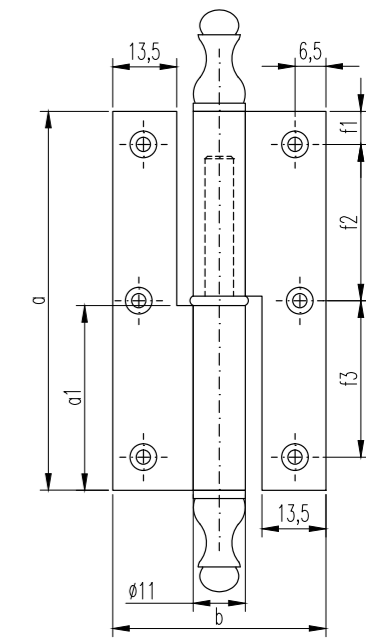
- Consisted of brass profile material
- milled and drilled
- with steel pin
- intermediate ring
- final tip ZK 19 Height: 20 mm
- screws optional in all surfaces available

It is also available in all RAL colors and in PVD coating and with rounded corners (radius 5 mm)

Packaging unit: 10 piece  
Low volume deliveries are possible



**Screws:**  
Screws optionally in all surface colors available  
DIN 97 3Ø x 20 mm



**Values in millimeters**

capacity with two hinges	15 kg	17 kg	19 kg	22 kg	25 kg	
hinge length a	50	60	80	100	120	
flap a1	24	29	39	49	59	
opened width b	45	45	45	45	45	
roll-Ø	11	11	11	11	11	
pin-Ø	6	6	6	6	6	
leaf width from roll	17	17	17	17	17	
ridge width	13,5	13,5	13,5	13,5	13,5	
leaf thickness s	2	2	2	2	2	
number of screw holes	6	6	6	6	8	
for countersunk wood screws by DIN 97 Ø	3	3	3	3	3	
	f1	7	7	8	10	11
	f2	18	23	32	40	32
	f3	18	23	32	40	34

**Article number**

**1151**

**Version:** 11 mm Ø straight

**Lengths:** 5. 50 mm, 6. 60 mm, 8. 80 mm, 10. 100 mm, 12. 120 mm

**Surfaces:** 01. Brass polished, 02. Brass matt blasted/brushed, 03. nickel-plated matt blasted/brushed, 04. nickel-plated polished, 05. antique, 06. burnished, 07. tin-plated, 08. gold-plated, 09. chromium-plated polished, 10. chromium-plated matt blasted/brushed, 11. black, 12. white, 13. tin 2.0, 14. nickel dark polished, 15. nickel dark matt blasted/brushed, 16. copper

**DIN Version:** 6. right, 7. left

**Corners:** 0. angular, 4. four rounded corners



### Brass cabinet lift-off hinge cranking D 7,5 for rebated doors

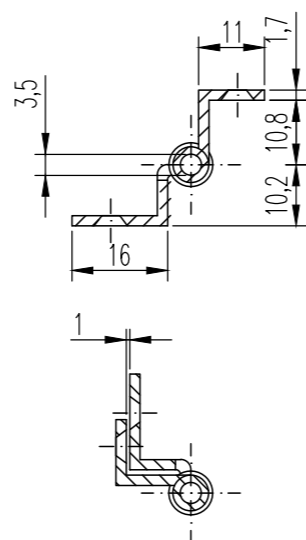
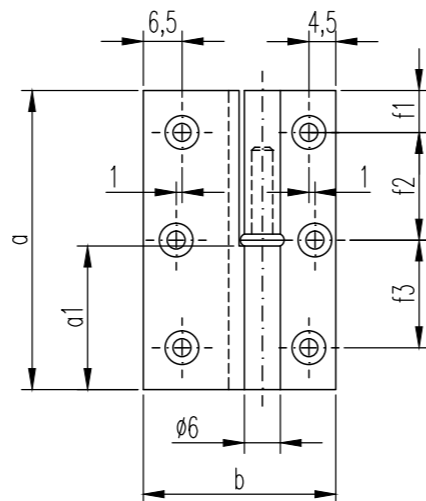
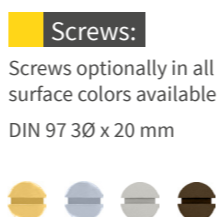
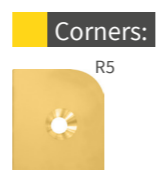


6 mm roll-Ø  
1,7 mm leaf thickness

- Consisted of brass profile material
- milled and drilled
- with steel pin
- intermediate ring
- screws optional in all surfaces available

It is also available in all RAL colors and in PVD coating and with rounded corners (radius 5 mm), 40 mm and from 80 mm with intermediate ring

Packaging unit: 10 piece (Low volume deliveries are possible)



#### Values in millimeters

capacity with two hinges	4 kg	6 kg	8 kg
hinge length a	40	50	60
flap a1	19	24	29
opened width b	32,2	32,2	32,2
roll-Ø	6	6	6
pin-Ø	3,5	3,5	3,5
leaf width / flap	16	16	16
outer post for door leaf width	11	11	11
leaf thickness s	1,7	1,7	1,7
number of screw holes	4	6	6
for countersunk wood screws by DIN 97 Ø	3	3	3
	f1	8	7
	f2	24	18
	f3	-	18

#### Article number

662

##### Version:

6 mm Ø,  
cranking D7,5

##### Lengths:

4. 40 mm  
5. 50 mm  
6. 60 mm

##### Surfaces:

01. Brass polished
02. Brass matt blasted/brushed
03. nickel-plated matt blasted/brushed
04. nickel-plated polished
05. antique
06. burnished
07. tin-plated
08. gold-plated
09. chromium-plated polished
10. chromium-plated matt blasted/brushed
11. black
12. white
13. tin 2.0
14. nickel dark polished
15. nickel dark matt blasted/brushed
16. copper

##### DIN Version:

6. right  
7. left

##### Corners:

0. angular  
4. four rounded corners

### Brass decorative cabinet lift-off hinge cranking D 7,5 for rebated doors

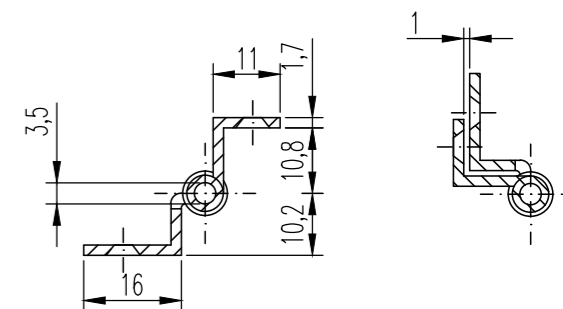
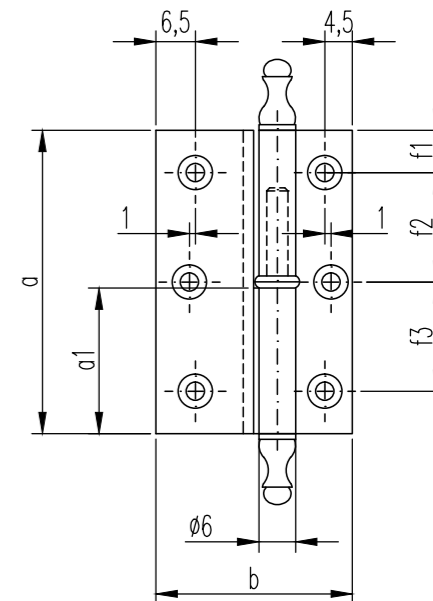
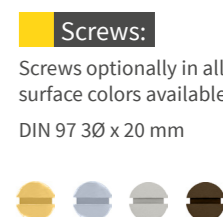
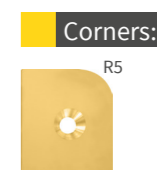


6 mm roll-Ø  
1,7 mm leaf thickness

- Consisted of brass profile material
- milled and drilled
- with steel pin
- intermediate ring
- final tip ZK 19 Height: 14 mm
- screws optional in all surfaces available

It is also available in all RAL colors and in PVD coating and with rounded corners (radius 5 mm)

Packaging unit: 10 piece (Low volume deliveries are possible)



#### Values in millimeters

capacity with two hinges	4 kg	6 kg	8 kg
hinge length a	40	50	60
flap a1	19	24	29
opened width b	32,2	32,2	32,2
roll-Ø	6	6	6
pin-Ø	3,5	3,5	3,5
leaf width / flap	16	16	16
outer post for door leaf width	11	11	11
leaf thickness s	1,7	1,7	1,7
number of screw holes	4	6	6
for countersunk wood screws by DIN 97 Ø	3	3	3
	f1	8	7
	f2	24	18
	f3	-	18

#### Article number

652

##### Version:

6 mm Ø,  
cranking D7,5

##### Lengths:

4. 40 mm  
5. 50 mm  
6. 60 mm

##### Surfaces:

01. Brass polished
02. Brass matt blasted/brushed
03. nickel-plated matt blasted/brushed
04. nickel-plated polished
05. antique
06. burnished
07. tin-plated
08. gold-plated
09. chromium-plated polished
10. chromium-plated matt blasted/brushed
11. black
12. white
13. tin 2.0
14. nickel dark polished
15. nickel dark matt blasted/brushed
16. copper

##### DIN Version:

6. right  
7. left

##### Corners:

0. angular  
4. four rounded corners



**Brass cabinet lift-off hinge**  
cranking D 7,5  
for rebated doors

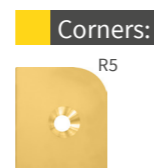


8 mm roll-Ø  
1,7 mm leaf thickness

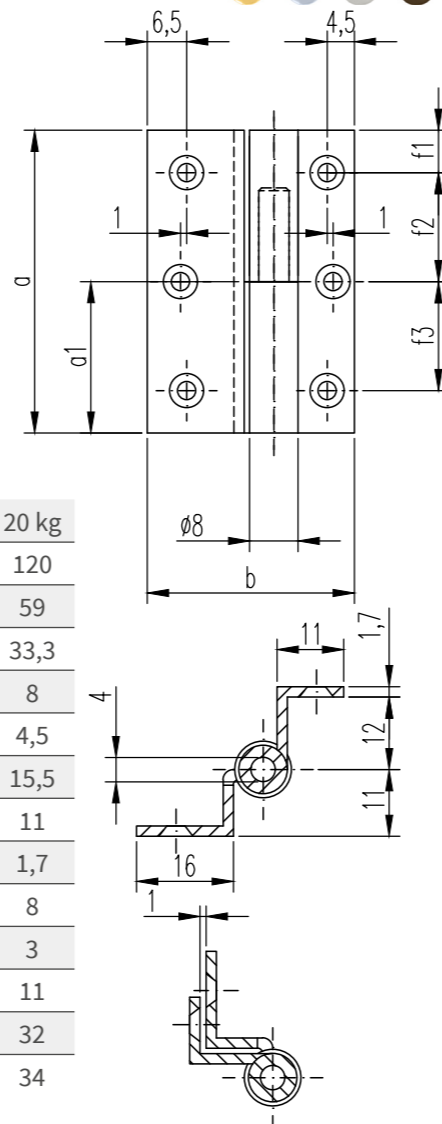
- Consisted of brass profile material
- milled and drilled
- with steel pin
- without intermediate ring
- screws optional in all surfaces available

It is also available in all RAL colors and in PVD coating and with rounded corners (radius 5 mm), 40 mm and from 80 mm with intermediate ring

Packaging unit: 10 piece (Low volume deliveries are possible)



**Screws:**  
Screws optionally in all surface colors available  
DIN 97 3Ø x 20 mm



**Values in millimeters**

capacity with two hinges	10 kg	12 kg	14 kg	16 kg	18 kg	20 kg
hinge length a	40	50	60	80	100	120
flap a1	19	25	30	39	49	59
opened width b	33,3	33,3	33,3	33,3	33,3	33,3
roll-Ø	8	8	8	8	8	8
pin-Ø	4,5	4,5	4,5	4,5	4,5	4,5
leaf width / flap	15,5	15,5	15,5	15,5	15,5	15,5
outer post for door leaf width	11	11	11	11	11	11
leaf thickness s	1,7	1,7	1,7	1,7	1,7	1,7
number of screw holes	4	6	6	6	6	8
for countersunk wood screws by DIN 97 Ø	3	3	3	3	3	3
	f1	8	7	7	8	10
	f2	24	18	23	32	40
	f3	-	18	23	32	40
	f4	-	-	-	-	32

**Article number**

862

**Version:**

8 mm Ø,  
cranking D7,5

**Lengths:**

- 4. 40 mm
- 5. 50 mm
- 6. 60 mm
- 8. 80 mm
- 10. 100 mm
- 12. 120 mm

**Surfaces:**

- 01. Brass polished
- 02. Brass matt blasted/brushed
- 03. nickel-plated matt blasted/brushed
- 04. nickel-plated polished
- 05. antique
- 06. burnished
- 07. tin-plated
- 08. gold-plated
- 09. chromium-plated polished
- 10. chromium-plated matt blasted brushed
- 11. black
- 12. white
- 13. tin 2.0
- 14. nickel dark polished
- 15. nickel dark matt blasted/brushed
- 16. copper

**DIN Version:**

- 6. right
- 7. left

**Corners:**

- 0. angular
- 4. four rounded corners

**Brass decorative cabinet lift-off hinge**  
cranking D 7,5  
for rebated doors

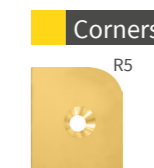


8 mm roll-Ø  
1,7 mm leaf thickness

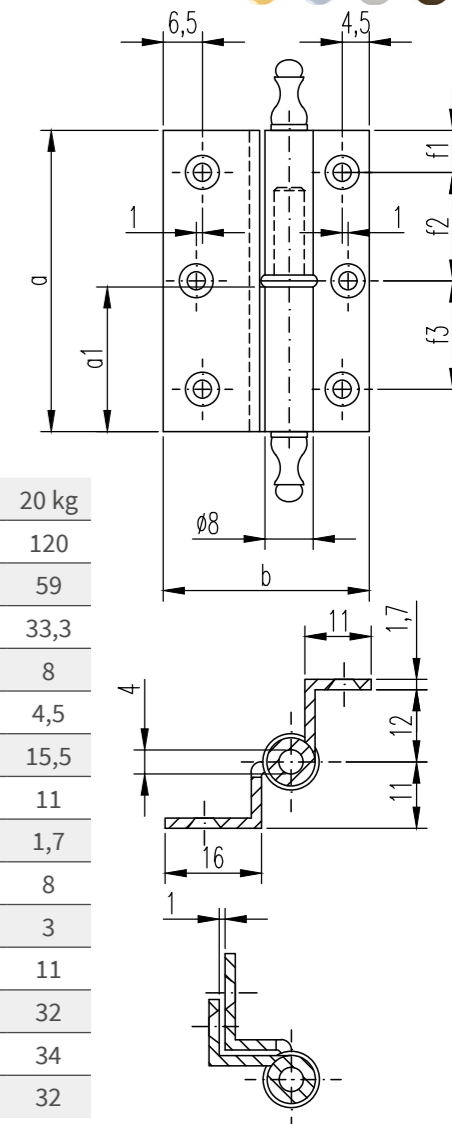
- Consisted of brass profile material
- milled and drilled
- with steel pin
- intermediate ring
- final tip ZK 19 Height: 15 mm
- screws optional in all surfaces available

It is also available in all RAL colors and in PVD coating and with rounded corners (radius 5 mm)

Packaging unit: 10 piece (Low volume deliveries are possible)



**Screws:**  
Screws optionally in all surface colors available  
DIN 97 3Ø x 20 mm



**Values in millimeters**

capacity with two hinges	10 kg	12 kg	14 kg	16 kg	18 kg	20 kg
hinge length a	40	50	60	80	100	120
flap a1	19	24	29	39	49	59
opened width b	33,3	33,3	33,3	33,3	33,3	33,3
roll-Ø	8	8	8	8	8	8
pin-Ø	4,5	4,5	4,5	4,5	4,5	4,5
leaf width / flap	15,5	15,5	15,5	15,5	15,5	15,5
outer post for door leaf width	11	11	11	11	11	11
leaf thickness s	1,7	1,7	1,7	1,7	1,7	1,7
number of screw holes	4	6	6	6	6	8
for countersunk wood screws by DIN 97 Ø	3	3	3	3	3	3
	f1	8	7	7	8	10
	f2	24	18	23	32	40
	f3	-	18	23	32	40
	f4	-	-	-	-	32

**Article number**

852

**Version:**

8 mm Ø,  
cranking D7,5

**Lengths:**

- 4. 40 mm
- 5. 50 mm
- 6. 60 mm
- 8. 80 mm
- 10. 100 mm
- 12. 120 mm

**Surfaces:**

- 01. Brass polished
- 02. Brass matt blasted/brushed
- 03. nickel-plated matt blasted/brushed
- 04. nickel-plated polished
- 05. antique
- 06. burnished
- 07. tin-plated
- 08. gold-plated
- 09. chromium-plated polished
- 10. chromium-plated matt blasted brushed
- 11. black
- 12. white
- 13. tin 2.0
- 14. nickel dark polished
- 15. nickel dark matt blasted/brushed
- 16. copper

**DIN Version:**

- 6. right
- 7. left

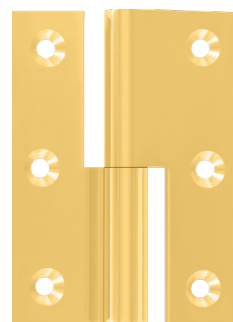
**Corners:**

- 0. angular
- 4. four rounded corners





**Brass cabinet lift-off hinge cranking B / C for recessed doors**

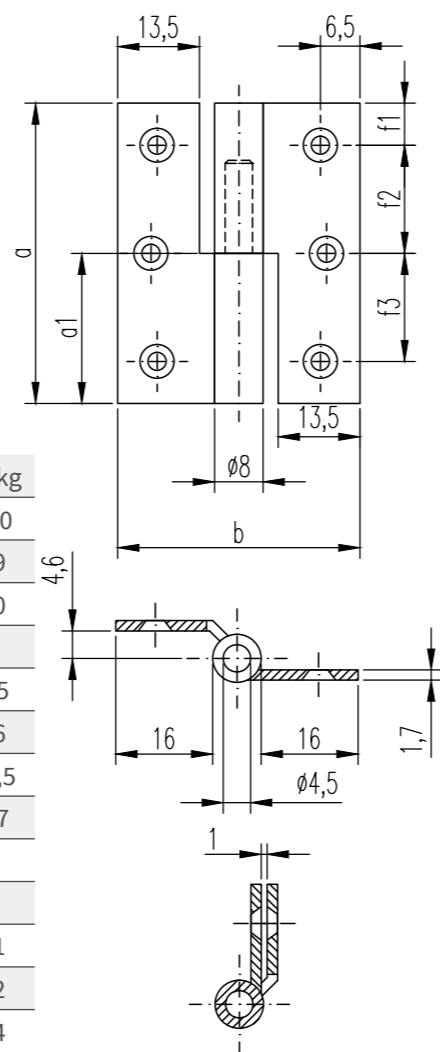
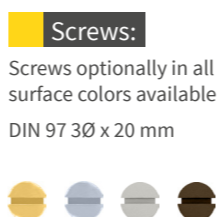
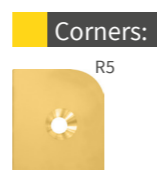


8 mm roll-Ø  
1,7 mm leaf thickness

- Consisted of brass profile material
- milled and drilled
- with steel pin
- without intermediate ring
- screws optional in all surfaces available

It is also available in all RAL colors and in PVD coating and with rounded corners (radius 5 mm), 40 mm and from 80 mm with intermediate ring

Packaging unit: 10 piece (Low volume deliveries are possible)



**Values in millimeters**

capacity with two hinges	10 kg	12 kg	14 kg	16 kg	18 kg	20 kg	
hinge length a	40	50	60	80	100	120	
flap a1	19	25	30	39	49	59	
opened width b	40	40	40	40	40	40	
roll-Ø	8	8	8	8	8	8	
pin-Ø	4,5	4,5	4,5	4,5	4,5	4,5	
leaf width / flap	16	16	16	16	16	16	
ridge width	13,5	13,5	13,5	13,5	13,5	13,5	
leaf thickness s	1,7	1,7	1,7	1,7	1,7	1,7	
number of screw holes	4	6	6	6	6	8	
for countersunk wood screws by DIN 97 Ø	3	3	3	3	3	3	
	f1	8	7	7	8	10	11
	f2	24	18	23	32	40	32
	f3	-	18	23	32	40	34

**Article number**

863

**Version:**

8 mm Ø, cranking B

**Lengths:**

- 4. 40 mm
- 5. 50 mm
- 6. 60 mm
- 8. 80 mm
- 10. 100 mm
- 12. 120 mm

**Surfaces:**

- 01. Brass polished
- 02. Brass matt blasted/brushed
- 03. nickel-plated matt blasted/brushed
- 04. nickel-plated polished
- 05. antique
- 06. burnished
- 07. tin-plated
- 08. gold-plated
- 09. chromium-plated polished
- 10. chromium-plated matt blasted/brushed
- 11. black
- 12. white
- 13. tin 2.0
- 14. nickel dark polished
- 15. nickel dark matt blasted/brushed
- 16. copper

**DIN Version:**

- 6. right
- 7. left

**Corners:**

- 0. angular
- 4. four rounded corners

**Brass decorative cabinet lift-off hinge cranking B / C for recessed doors**

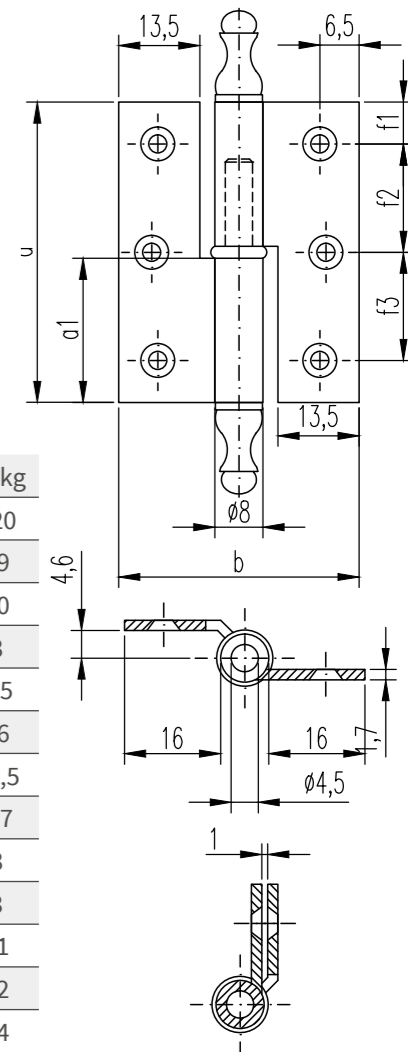
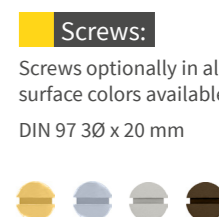
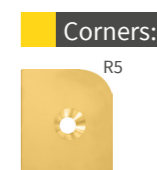


8 mm roll-Ø  
1,7 mm leaf thickness

- Consisted of brass profile material
- milled and drilled
- with steel pin
- intermediate ring
- final tip ZK 19 Height: 15 mm
- screws optional in all surfaces available

It is also available in all RAL colors and in PVD coating and with rounded corners (radius 5 mm)

Packaging unit: 10 piece (Low volume deliveries are possible)



**Values in millimeters**

capacity with two hinges	10 kg	12 kg	14 kg	16 kg	18 kg	20 kg	
hinge length a	40	50	60	80	100	120	
flap a1	19	24	29	39	49	59	
opened width b	40	40	40	40	40	40	
roll-Ø	8	8	8	8	8	8	
pin-Ø	4,5	4,5	4,5	4,5	4,5	4,5	
leaf width / flap	16	16	16	16	16	16	
ridge width	13,5	13,5	13,5	13,5	13,5	13,5	
leaf thickness s	1,7	1,7	1,7	1,7	1,7	1,7	
number of screw holes	4	6	6	6	6	8	
for countersunk wood screws by DIN 97 Ø	3	3	3	3	3	3	
	f1	8	7	7	8	10	11
	f2	24	18	23	32	40	32
	f3	-	18	23	32	40	34

**Article number**

853

**Version:**

8 mm Ø, cranking B

**Lengths:**

- 4. 40 mm
- 5. 50 mm
- 6. 60 mm
- 8. 80 mm
- 10. 100 mm
- 12. 120 mm

**Surfaces:**

- 01. Brass polished
- 02. Brass matt blasted/brushed
- 03. nickel-plated matt blasted/brushed
- 04. nickel-plated polished
- 05. antique
- 06. burnished
- 07. tin-plated
- 08. gold-plated
- 09. chromium-plated polished
- 10. chromium-plated matt blasted/brushed
- 11. black
- 12. white
- 13. tin 2.0
- 14. nickel dark polished
- 15. nickel dark matt blasted/brushed
- 16. copper

**DIN Version:**

- 6. right
- 7. left

**Corners:**

- 0. angular
- 4. four rounded corners





**Brass angled belt cranking L for blunt overlay doors**

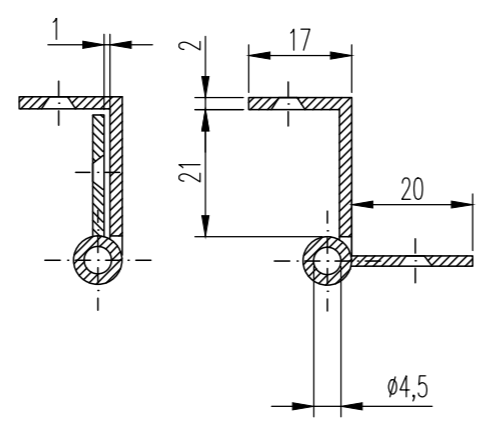
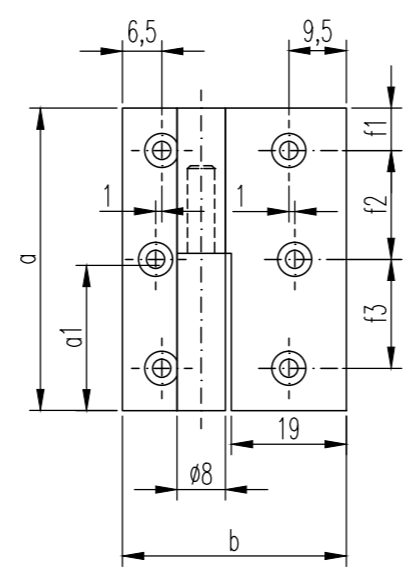
8 mm roll-Ø  
2 mm leaf thickness

- Consisted of brass profile material
- milled and drilled
- with steel pin
- cylindrical
- screws optional in all surfaces available

Packaging unit: 10 piece  
Low volume deliveries are possible



**Screws:**  
Screws optionally in all surface colors available  
DIN 97 3Ø x 20 mm



**Values in millimeters**

capacity with two hinges	12 kg	14 kg	16 kg	18 kg	
hinge length a	50	60	80	100	
flap a1	25	30	40	50	
opened width b	37	37	37	37	
roll-Ø	8	8	8	8	
pin-Ø	4,5	4,5	4,5	4,5	
leaf width from Rolle	17	17	17	17	
ridge width	20	20	20	20	
leaf thickness s	2	2	2	2	
number of screw holes	6	6	6	6	
for countersunk wood screws by DIN 97 Ø	3	3	3	3	
	f1	7	7	8	10
	f2	18	23	32	40
	f3	18	23	32	40

**Article number**

**87**

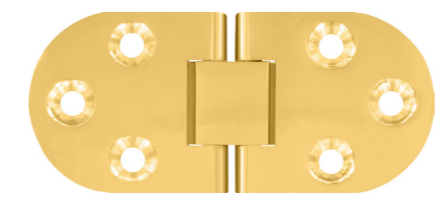
**Version:**  
8 mm Ø, cranking L

**Lengths:**  
5. 50 mm  
6. 60 mm  
8. 80 mm  
10. 100 mm

**Surfaces:**  
01. Brass polished  
02. Brass matt blasted/brushed  
03. nickel-plated matt blasted/brushed  
04. nickel-plated polished  
06. burnished  
11. black  
13. tin 2.0

different surfaces upon request

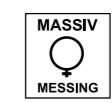
**DIN Version:**  
6. right  
7. left



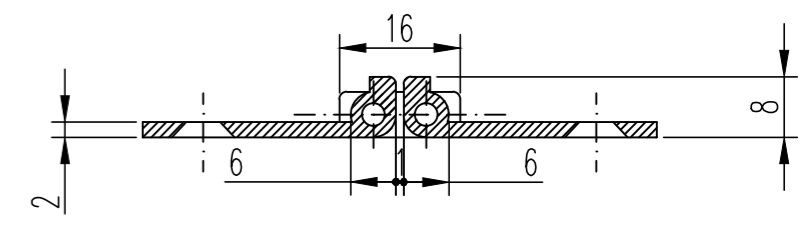
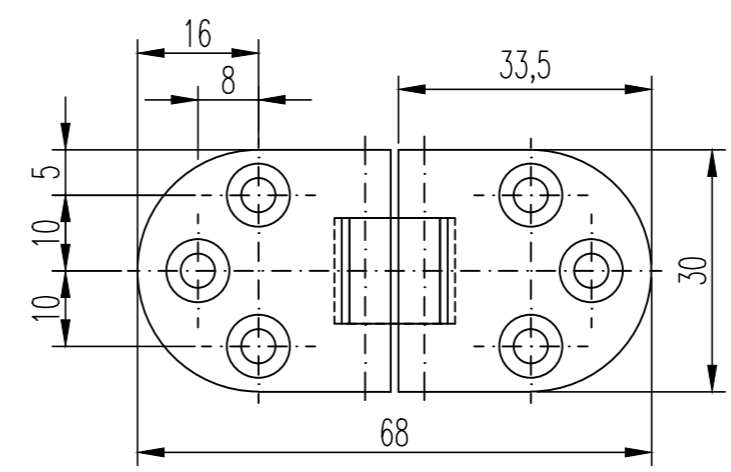
**Sewing table hinge**

- Consisted of brass profile material
- milled and drilled
- including two solid steel pins and a double joint
- with rounded semicircular leaves
- for mechanical insertion
- screws optional in all surfaces available

Packaging unit: 10 piece  
Low volume deliveries are possible



**Screws:**  
Screws optionally in all surface colors available  
DIN 97 3Ø x 20 mm



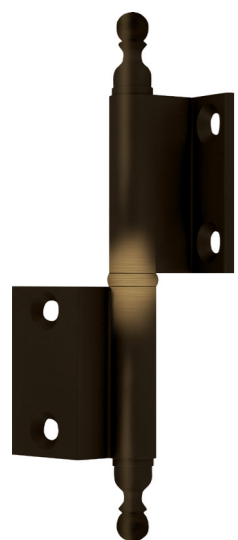
**Article number**

**68**

**Version:**  
Sewing table hinge

**Surfaces:**  
01. Brass polished  
04. nickel-plated polished  
09. chromium-plated polished

different surfaces upon request



### Messing-Lappenband cranking DI for unscrewing to attach rebated furniture doors

8 mm roll-Ø

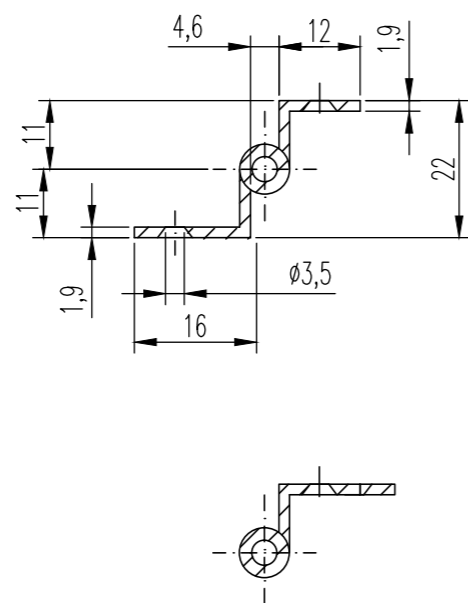
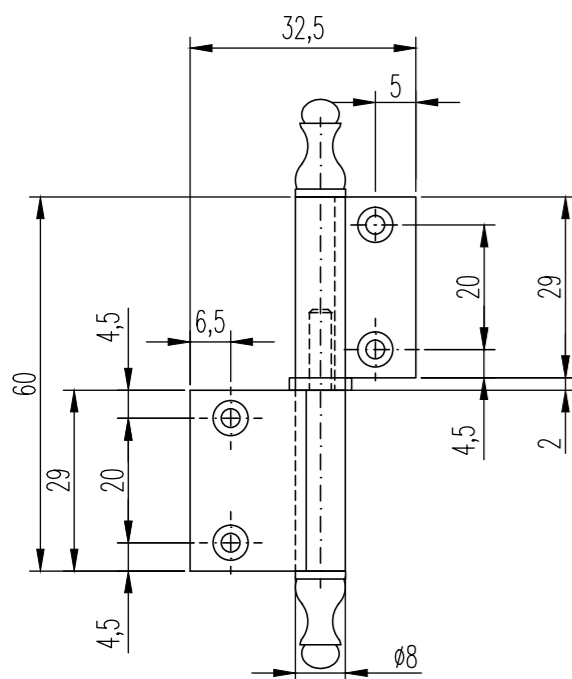
- Consisted of brass profile material
- milled and drilled
- with steel pin
- intermediate ring
- final tip ZK 19 Height: 15 mm
- screws optional in all surfaces available

Packaging unit: 10 piece  
Low volume deliveries are possible



**Screws:**

Screws optionally in all surface colors available  
DIN 97 3Ø x 20 mm



### Door and flap hinges to screw on recessed and cranked doors or flaps

8 mm roll-Ø

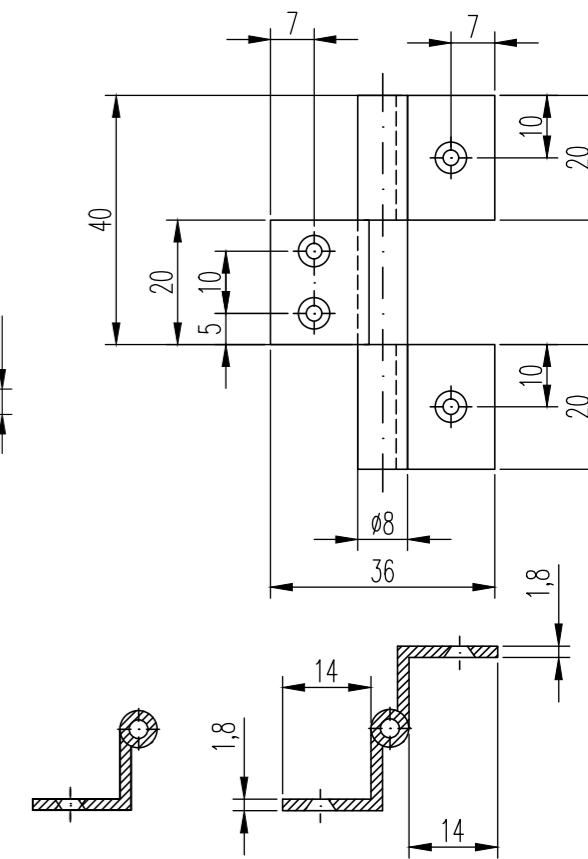
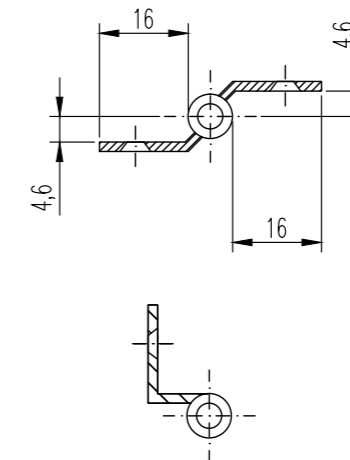
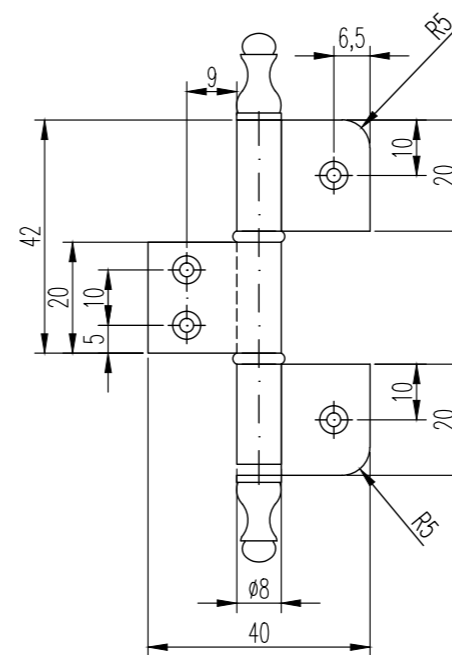
- Consisted of brass profile material
- milled and drilled
- intermediate rings available
- screws optional in all surfaces available

Packaging unit: 10 piece  
Low volume deliveries are possible



**Screws:**

Screws optionally in all surface colors available  
DIN 97 3Ø x 20 mm



**Article number**

540

**Version:**

8 mm Ø

**Lengths:**

6. 60 mm, 12 kg capacity  
8. 80 mm, 14 kg capacity

**Surfaces:**

01. Brass polished
02. Brass matt brushed
05. antique

different surfaces upon request

**DIN Version:**

6. right  
7. left

**Article number**

**Version:**

7. 8 mm Ø, cranking B  
8. 8 mm Ø, cranked

**Lengths:**

6. 60 mm, 12 kg capacity

**Surfaces:**

01. Brass polished
02. Brass matt blasted/brushed
03. nickel-plated matt blasted/brushed
04. nickel-plated polished

different surfaces upon request



Messing-Fitschenband  
for rebated doors



8 mm and 10 mm roll-Ø  
shifted leaves

- Consisted of brass profile material
- milled and drilled
- with steel pin
- perforated or unperforated
- intermediate ring and final tip ZK 19 or cylindrical
- screws optional in all surfaces available

Available final tip  
Nr. 1 | 3

Packaging unit: 10 piece  
Low volume deliveries are possible

Final tip:



Article number

30

Version:

8 mm Ø

Lengths:

- 80. 80 mm, 8 kg capacity
- 10. 100 mm, 10 kg capacity
- 12. 120 mm, 12 kg capacity

Surfaces:

- 00. raw
- 01. Brass polished
- 02. Brass matt blasted/brushed
- 03. nickel-plated matt blasted/brushed
- 04. nickel-plated polished
- 05. antique
- 06. burnished
- 07. tin-plated
- 08. gold-plated
- 09. chromium-plated polished
- 10. chromium-plated matt blasted/brushed

Final tip:

- 1. cylindrical
- 3. ZK 19

DIN Version:

- 6. right
- 7. left

Article number

60

Version:

10 mm Ø

Lengths:

- 80. 80 mm, 10 kg capacity
- 10. 100 mm, 12 kg capacity
- 12. 120 mm, 14 kg capacity

Surfaces:

- 00. raw
- 01. Brass polished
- 02. Brass matt blasted/brushed
- 03. nickel-plated matt blasted/brushed
- 04. nickel-plated polished
- 05. antique
- 06. burnished
- 07. tin-plated
- 08. gold-plated
- 09. chromium-plated polished
- 10. chromium-plated matt blasted/brushed

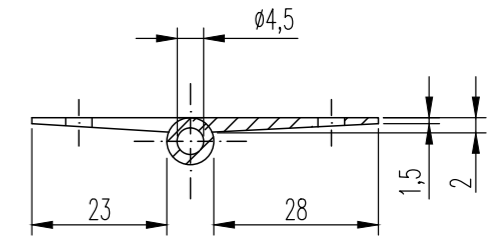
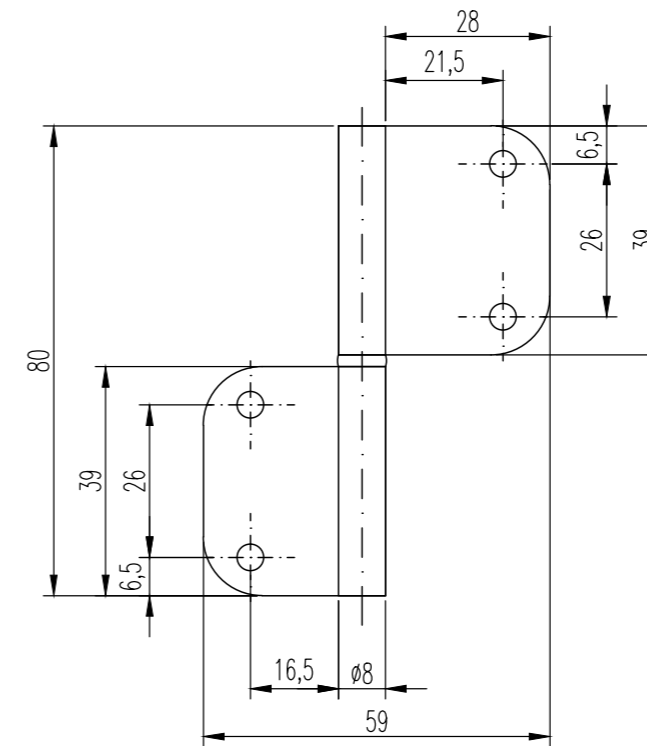
Final tip:

- 1. cylindrical
- 3. ZK 19

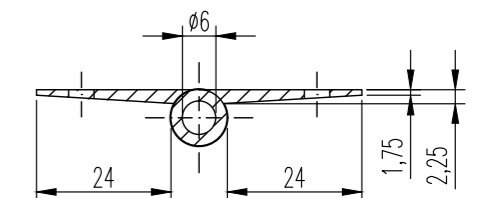
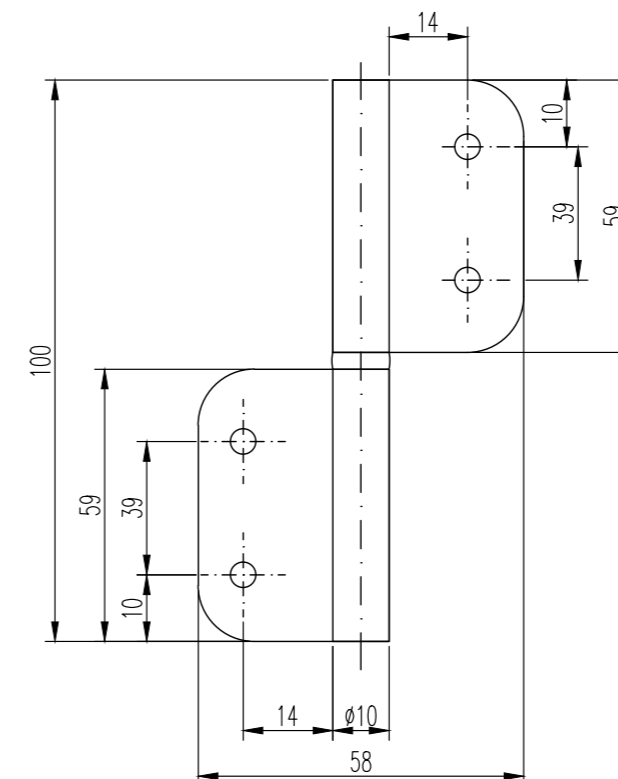
DIN Version:

- 6. right
- 7. left

Drilling pattern for easier assembly not necessarily specified.



Drilling pattern for easier assembly not necessarily specified.





**Messing-Fensterbänder Nr. 040**  
for rebated doors



leaf width from roll:  
flap 24 mm  
door leaf width 29 mm

- Consisted of brass profile material
- milled and drilled
- with steel pin
- with shifted leaves
- with brass intermediate ring
- perforated or unperforated

· screws optional in all surfaces available

Available final tips  
Nr. 1 | 2 | 6 | 9

Packaging unit: 10 piece  
Low volume deliveries are possible

**Final tip:**



1. cylindrical



2. ZK 9a  
h: 8 mm



6. ZK W  
h: 36 mm



9. ZK D  
h: 12 mm

**Article number**

40

**Version:**

12 mm Ø

**Lengths:**

- 8. 80 mm, 15 kg capacity
- 1. 100 mm, 18 kg capacity
- 12. 120 mm, 22 kg capacity
- 14. 140 mm, 25 kg capacity

**Surfaces:**

- 00. raw
- 01. Brass polished
- 02. Brass matt blasted/brushed
- 03. nickel-plated matt blasted/brushed
- 04. nickel-plated polished
- 05. antique
- 06. burnished
- 07. tin-plated
- 08. gold-plated
- 09. chromium-plated polished
- 10. chromium-plated matt blasted/brushed

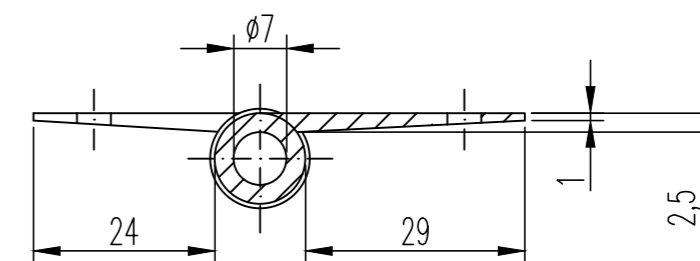
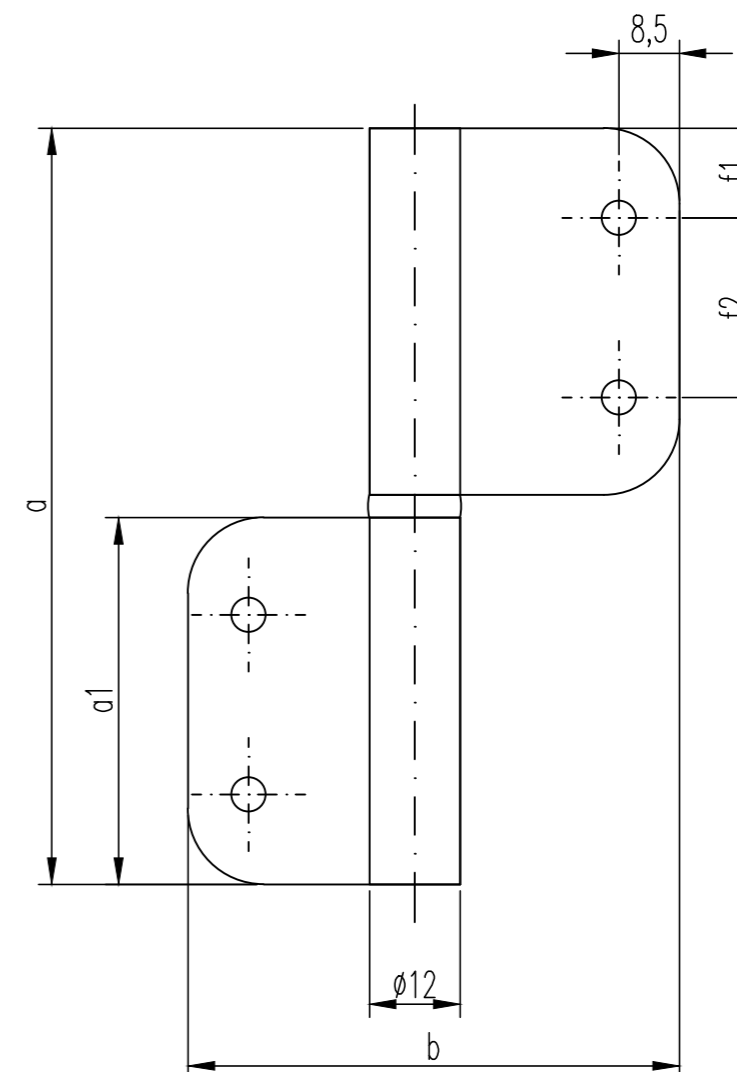
**Final tip:**

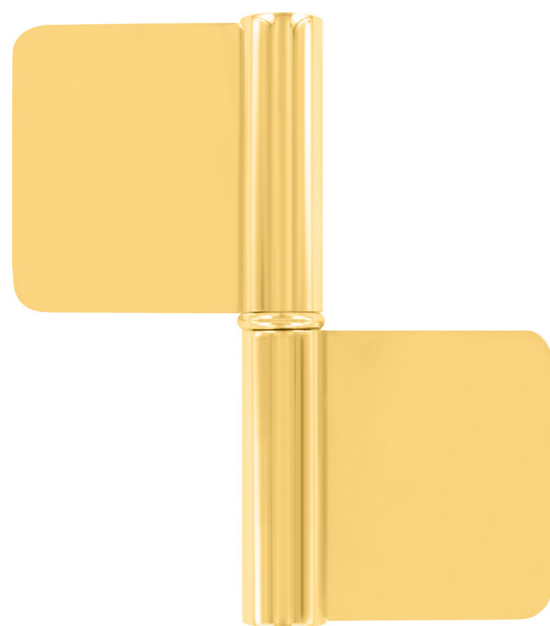
- 1. cylindrical
- 2. ZK 9a
- 6. ZK B
- 9. ZK D

**DIN Version:**

- 6. right
- 7. left

Drilling pattern for easier assembly not necessarily specified.





**Brass mortise hinge for rebated doors  
Nr. 050**



14 mm roll-Ø  
with 2 shifted leaves

leaf width from roll:  
flap 38 mm  
door leaf width 38 mm

- Consisted of brass profile material
- milled and drilled
- with steel pin
- with intermediate ring
- screws optional in all surfaces available

Available final tips  
Nr. 1 | 3 | 4

Packaging unit: 10 piece  
Low volume deliveries are possible

**Final tip:**



1. cylindrical



3. ZK 19  
h: 31 mm



4. ZK 9  
h: 5 mm

**Article number**

50

**Version:**

14 mm Ø

**Lengths:**

- 10. 100 mm, 20 kg capacity
- 12. 120 mm, 30 kg capacity
- 14. 140 mm, 40 kg capacity
- 16. 160 mm, 50 kg capacity

**Surfaces:**

- 00. raw
- 01. Brass polished
- 02. Brass matt blasted/brushed
- 03. nickel-plated matt blasted/brushed
- 04. nickel-plated polished
- 05. antique
- 06. burnished
- 07. tin-plated
- 08. gold-plated
- 09. chromium-plated polished
- 10. chromium-plated matt blasted/brushed

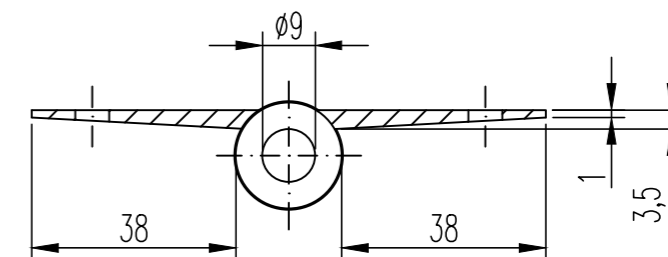
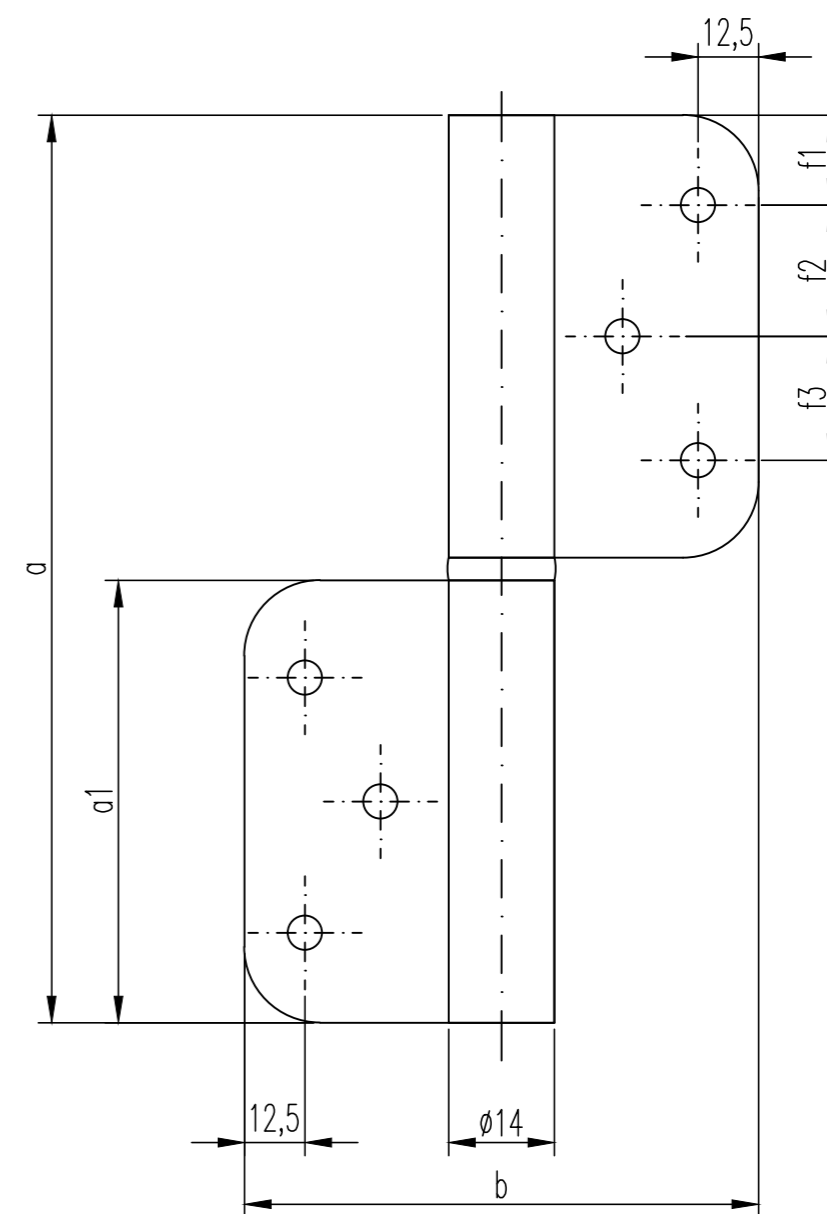
**Final tip:**

- 1. cylindrical
- 2. ZK 9a
- 3. ZK 19
- 4. ZK 9
- 6. ZK B
- 8. ZK E

**DIN Version:**

- 6. right
- 7. left

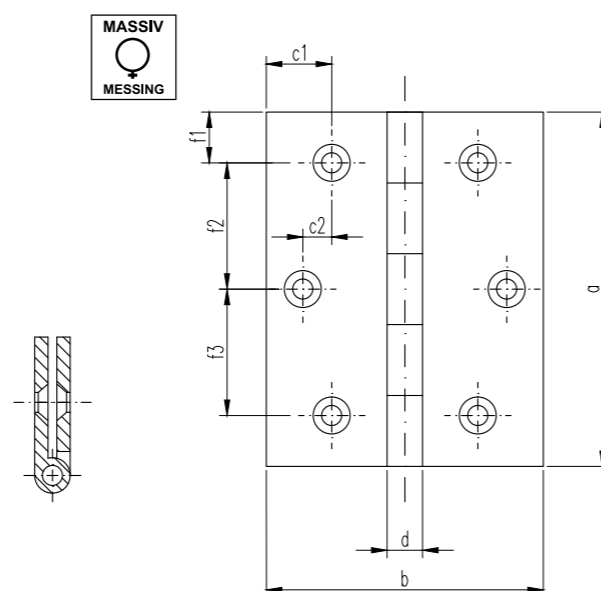
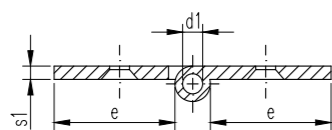
Drilling pattern for easier assembly not necessarily specified.





### Solid brass hinges Nr. 507-100

- Consisted of brass profile material
- milled and drilled
- with fixed brass pin or stainless steel pin



### Article number

3



#### Lengths:

- 0. 20 x 16 mm
- 1. 20 x 20 mm
- 3. 30 x 20 mm
- 4. 40 x 20 mm
- 5. 30 x 30 mm
- 6. 40 x 30 mm
- 7. 50 x 30 mm
- 24. 40 x 35 mm
- 26. 60 x 35 mm
- 8. 40 x 40 mm
- 9. 50 x 40 mm
- 10. 60 x 40 mm
- 35. 70 x 40 mm
- 11. 50 x 50 mm
- 12. 60 x 50 mm
- 22. 70 x 50 mm
- 13. 80 x 50 mm
- 21. 50 x 60 mm
- 27. 60 x 60 mm
- 28. 70 x 60 mm
- 14. 80 x 60 mm
- 37. 100 x 60 mm
- 30. 60 x 80 mm
- 16. 80 x 80 mm
- 41. 90 x 80 mm
- 18. 100 x 80 mm
- 52. 90 x 90 mm
- 20. 40 x 100 mm
- 32. 50 x 100 mm
- 33. 80 x 100 mm
- 15. 100 x 100 mm



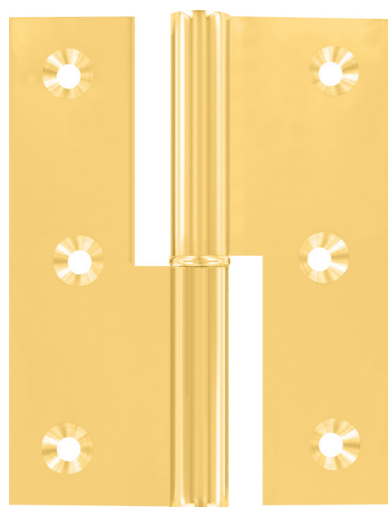
#### Surfaces:

- 1. Brass finished
  - 3. Brass polished
  - 5. nickel-plated polished
  - 6. nickel-plated matt
  - 7. chromium-plated polished
  - 8. chromium-plated matt
  - 9. burnished
- different surfaces upon request

### Values in millimeters

a x b	d	d1	c1	c2	e	f1	f2	f3	f4	s1	Number of screw holes	for countersunk wood screws
20x16	4	2	3,5	-	6	4	12	-	-	1,5	4	2,5
20x20	4	2	3,5	-	8	4	12	-	-	1,5	4	2,5
30x20	4	2	3,5	-	8	7	16	-	-	1,5	4	2,5
40x20	5	2	3,5	-	8	8	24	-	-	2	4	2,5
30x30	5	3	6	-	12,5	7	16	-	-	2	4	2,5
40x30	5	3	6	-	12,5	8	24	-	-	2	4	2,5
50x30	5	3	6	2	12,5	9	16	16	-	2	6	2,5
40x35	5	3	8,5	-	15	8	24	-	-	2	4	3
60x35	5	3	8,5	2,5	15	6	24	24	-	2	6	3
40x40	5,5	3	8,5	-	17,25	8	24	-	-	2	4	3
50x40	5,5	3	8,5	2,5	17,25	9	16	16	-	2	6	3
60x40	5,5	3	8,5	2,5	17,25	6	24	24	-	2	6	3
70x40	5,5	3	8,5	-	-	-	-	-	-	2	6	3
50x50	6,5	3,5	13	-	22,5	9	16	16	-	2,5	6	3
60x50	6,5	3,5	13	7,5	22,5	6	24	24	-	2,5	6	3
70x50	6,5	3,5	13	7,5	22,5	10	25	25	-	2,5	6	3
80x50	6,5	3,5	13	7,5	22,5	8	32	32	-	2,5	6	3
50x60	7	4	16	-	27	9	16	16	-	3	6	3
60x60	7	4	16	10	27	6	24	24	-	3	6	3
70x60	7	4	13,5	10	27	10	25	25	-	3	6	3
80x60	7	4	16	10	27	8	32	32	-	3	6	3
100x60	7	4	16	10	27	-	-	-	-	3	8	3
60x80	8	4	26,5	17,5	36	10	20	20	-	3	6	4,5
80x80	8	4	26,5	17,5	36	14,5	17	17	17	3	8	4,5
90x80	8	4	-	-	-	-	-	-	-	3	8	4,5
100x80	8	4	26,5	17,5	36	14	24	24	24	3	8	4,5
90x90	7	4	-	-	41,5	-	-	-	-	3	8	4,5
40x100	7	4	31	17,5	46	10	20	10	-	3	6	4,5
50x100	7	4	-	-	-	-	-	-	-	3	6	4,5
80x100	7	4	31	17,5	46	14,5	17	17	17	3	8	4,5
100x100	7	4	31	17,5	46	14	14	24	24	3	8	4,5

With different screw hole sizes upon request.



**Brass door lift-off hinges**

33,0 mm leaf width  
3,0 mm leaf thickness

Consisted of brass profile material  
· with fixed pin  
· with intermediate ring

Available final tips  
Nr. 1 | 2 | 6 | 9

**Brass window hinge**

12 mm roll-Ø  
3,0 mm leaf thickness

Consisted of brass profile material  
· milled and drilled  
· with brass pin  
· with intermediate ring

Available final tips  
Nr. 1 | 2 | 6 | 9

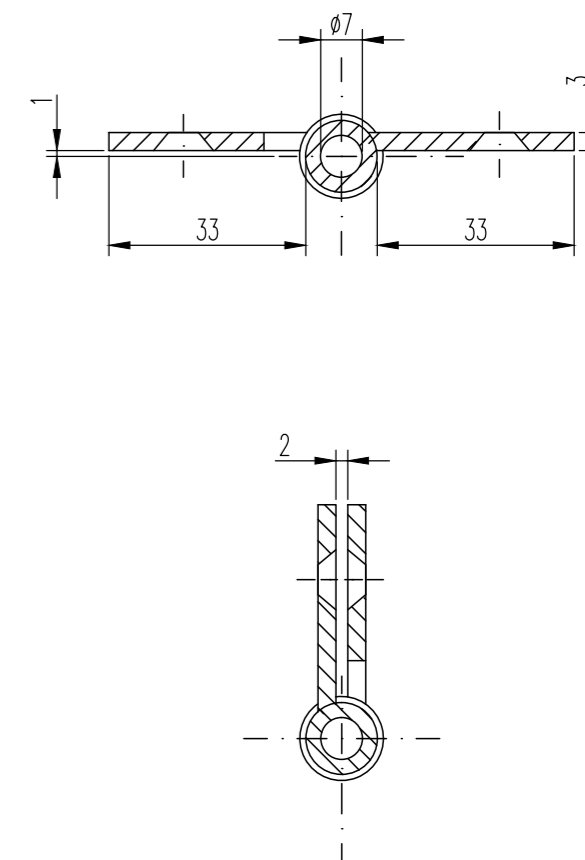
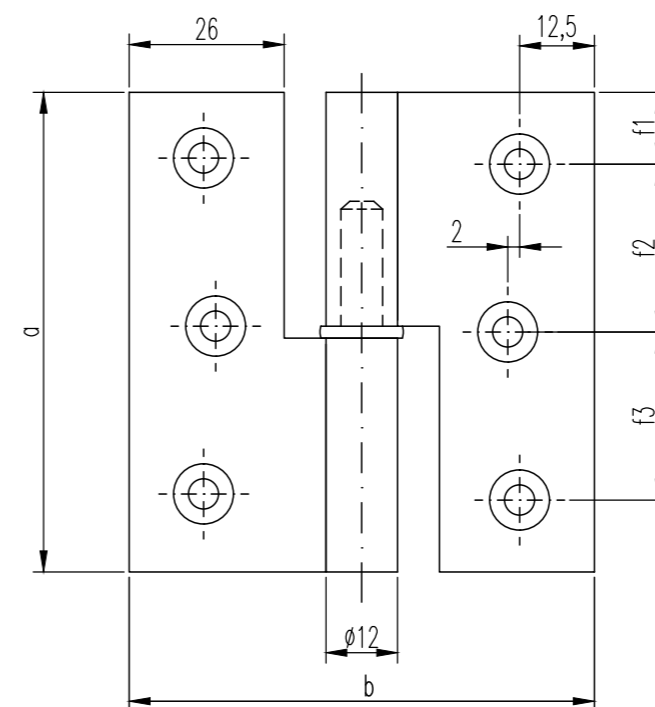


**Corners:**



**Screws:**

Screws optionally in all surface colors available



**Final tip:**

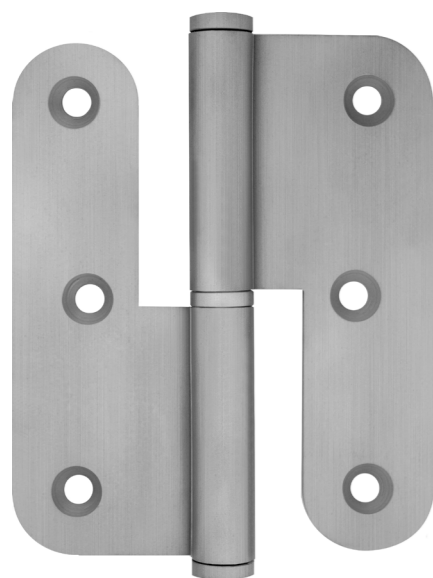


**Article number**

 <b>Lengths:</b> 011. 80 mm 031. 100 mm 081. 120 mm	 <b>Surfaces:</b> 01. Brass polished 02. Brass matt blasted or brushed  different surfaces upon request	 <b>Final tip:</b> 1. cylindrical 2. ZK 9a 6. ZK W 9. ZK D	 <b>DIN Version:</b> 6. right 7. left	 <b>Corners:</b> 0. angular 4. four rounded corners 6. six rounded corners
---	--	---	--	--

**Values in millimeters**

capacity	with two hinges	15 kg	20 kg	25 kg
hinge length	a	80	100	120
flap	a1	39	49	59
opened width	b	78	78	78
roll-Ø		12	12	12
pin-Ø		7	7	7
leaf width from roll		33	33	33
ridge width		26	26	26
leaf thickness		3	3	3
number of screw holes		6	6	8
for countersunk wood screws by DIN 97 Ø		4,5	4,5	4,5
	f1	12	11,5	15
	f2	28	38,5	30
	f3	28	38,5	30
	f4	-	-	30



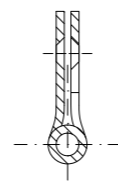
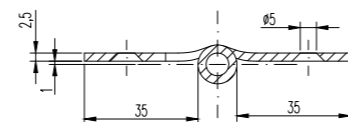
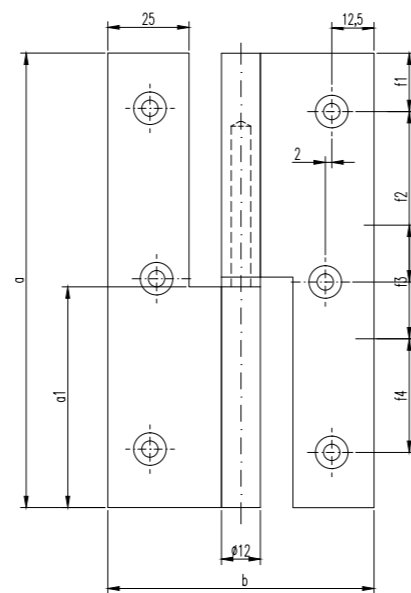
Stainless steel  
for blunt doors

12 mm roll-Ø  
2,5 mm leaf thickness



- rolled version
- with fixed pin
- with intermediate ring
- intermediate ring and cylinder head also in V 4 A available
- screws optional in all surfaces available

Corners:



Values in millimeters

capacity with two hinges	30 kg	40 kg
hinge length a	80	100
flap a1	38,5	48,5
opened width b	82	82
roll-Ø	12	12
pin-Ø	7	7
leaf width from roll	35	35
ridge width	25	25
leaf thickness	2,5	2,5
number of screw holes	6	6
for countersunk wood screws by DIN 97 Ø	4,5	4,5
f1	10	12,5
f2	30	38
f3	30	38

Article number

12				
<b>Version:</b>	<b>Lengths:</b>	<b>Surfaces:</b>	<b>DIN Version:</b>	<b>Corners:</b>
12 mm Ø straight	08. 80 mm 10. 100 mm	01. grinded and brushed 02. blasted	6. right 7. left	0. angular 6. six rounded corners



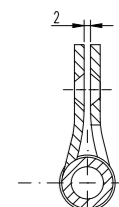
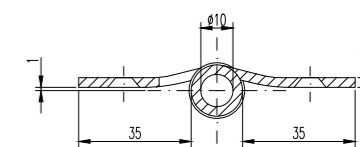
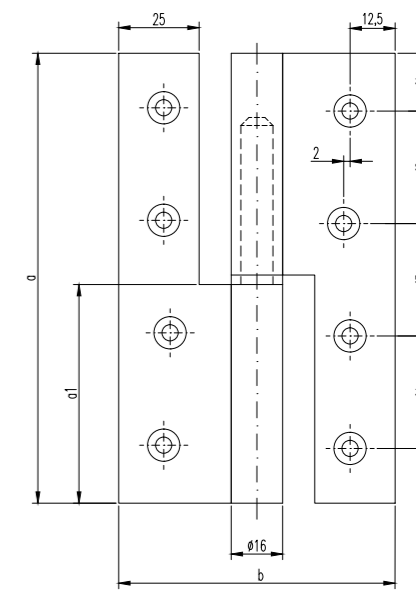
Stainless steel  
for blunt doors

16 mm roll-Ø  
from 3,0 mm leaf thickness



- rolled Version
- with fixed pin
- with intermediate ring and cylinder head also in V 4 A available
- screws optional in all surfaces available

Corners:



Values in millimeters

capacity with two hinges	50 kg	60 kg	80 kg	100 kg
hinge length a	100	120	140	160
flap a1	48,5	58,5	68,5	78,5
opened width b	86	86	86	86
roll-Ø	16	16	16	16
pin-Ø	10	10	10	10
leaf width from roll	35	35	35	35
ridge width	25	25	25	25
leaf thickness	3,0	3,0	3,0	3,0
number of screw holes	6	8	8	8
for countersunk wood screws by DIN 97 Ø	4,5	4,5	4,5	4,5
f1	11,5	14,5	17,5	17,5
f2	38,5	30	35	41
f3	38,5	30	35	43

Article number

100				
<b>Version:</b>	<b>Lengths:</b>	<b>Surfaces:</b>	<b>DIN Version:</b>	<b>Corners:</b>
16 mm Ø straight	1. 100 mm 2. 120 mm 3. 140 mm 4. 160 mm	01. grinded and brushed 02. blasted	6. right 7. left	0. angular 6. six rounded corners



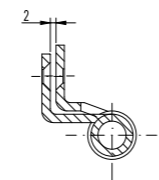
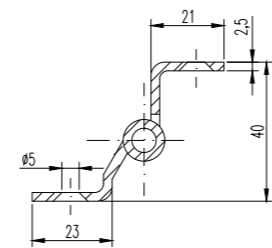
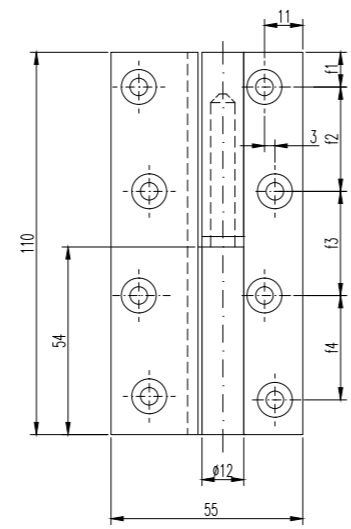
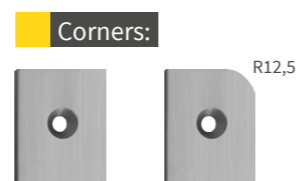


Stainless steel  
for rebated doors



12 mm roll-Ø  
2,5 mm leaf thickness

- rolled version
- with fixed pin
- with intermediate ring
- intermediate ring and cylinder head also in V 4 A available
- screws optional in all surfaces available



Values in millimeters

capacity with two hinges	40 kg
hinge length a	100
flap a1	68,5
opened width b	55
roll-Ø	12
pin-Ø	7
leaf width/ flap	23
outer post for door leaf width	21
leaf thickness	2,5
number of screw holes	8
for countersunk wood screws by DIN 97 Ø	5
f1	10
f2	30
f3	30
f4	30

Article number

12				
<b>Version:</b>	<b>Lengths:</b>	<b>Surfaces:</b>	<b>DIN Version:</b>	<b>Corners:</b>
12 mm Ø cranking D 13	1. 100 mm	01. grinded and brushed 02. blasted	6. right 7. left	0. angular 4. four rounded corners

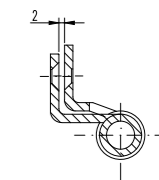
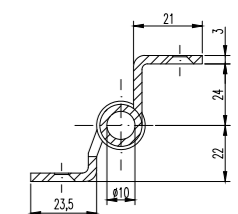
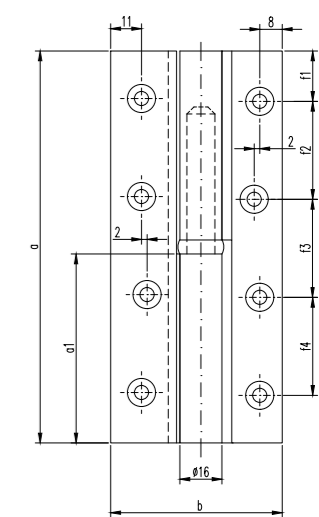
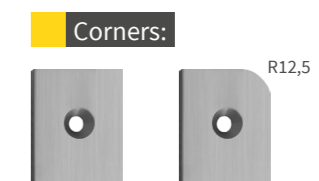


Stainless steel  
for blunt doors



16 mm roll-Ø  
from 3,0 mm leaf thickness

- rolled version
- with fixed pin
- with intermediate ring and cylinder head
- intermediate ring and cylinder head also in V 4 A available
- screws optional in all surfaces available



Values in millimeters

capacity with two hinges	50 kg	60 kg	80 kg	100 kg
hinge length a	100	120	140	160
flap a1	48,5	58,5	68,5	78,5
opened width b	59,5	59,5	59,5	59,5
roll-Ø	16	16	16	16
pin-Ø	10	10	10	10
leaf width / flap	23,5	23,5	23,5	23,5
outer post for door leaf width	21	21	21	21
leaf thickness	3	3	3	3
number of screw holes	6	8	8	8
for countersunk wood screws by DIN 97 Ø	4,5	4,5	4,5	4,5
f1	11,5	14,5	17,5	17,5
f2	38,5	30	35	41
f3	38,5	30	35	43
f4	-	30	35	41

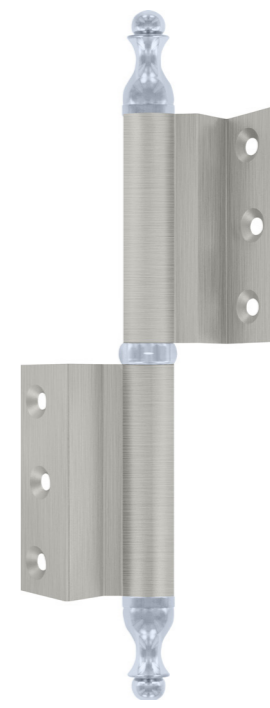
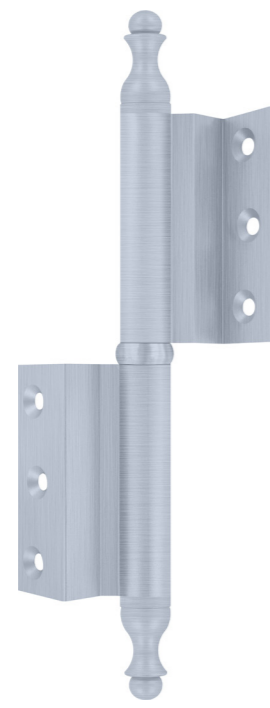
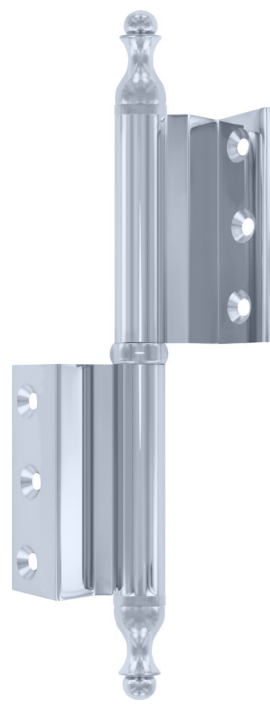
Article number

101				
<b>Version:</b>	<b>Lengths:</b>	<b>Surfaces:</b>	<b>DIN Version:</b>	<b>Corners:</b>
16 mm Ø straight	1. 100 mm 2. 120 mm 3. 140 mm 4. 160 mm	01. grinded and brushed 02. blasted	6. right 7. left	0. angular 4. four rounded corners



Surfaces

Bi-Color can also be manufactured in the colours of your door handle set.



09 | chromium-plated polished

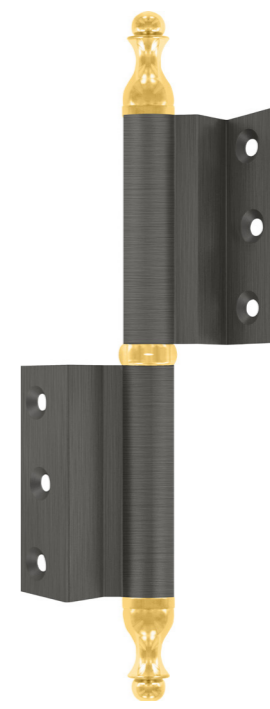
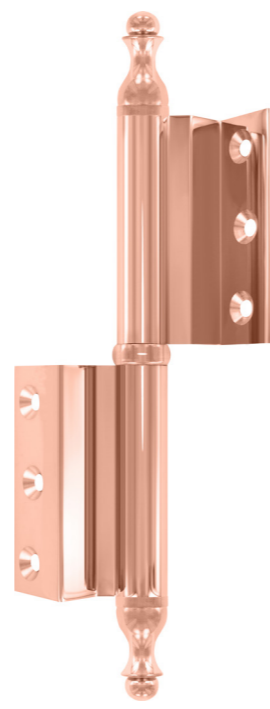
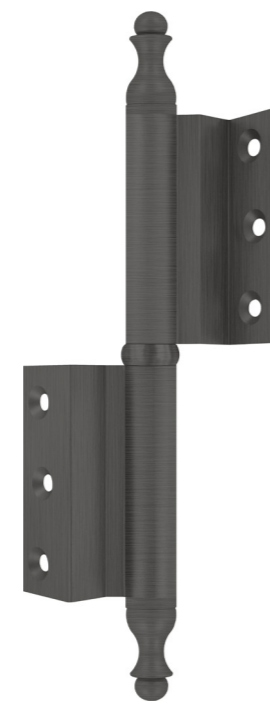
10 | chromium-plated matt blasted/brushed

11 | black

12 | white

nickel dark polished chromium-plated polished

Stainless steel finish chromium-plated polished



13 | tin 2.0

14 | nickel dark polished

15 | nickel dark matt blasted/brushed

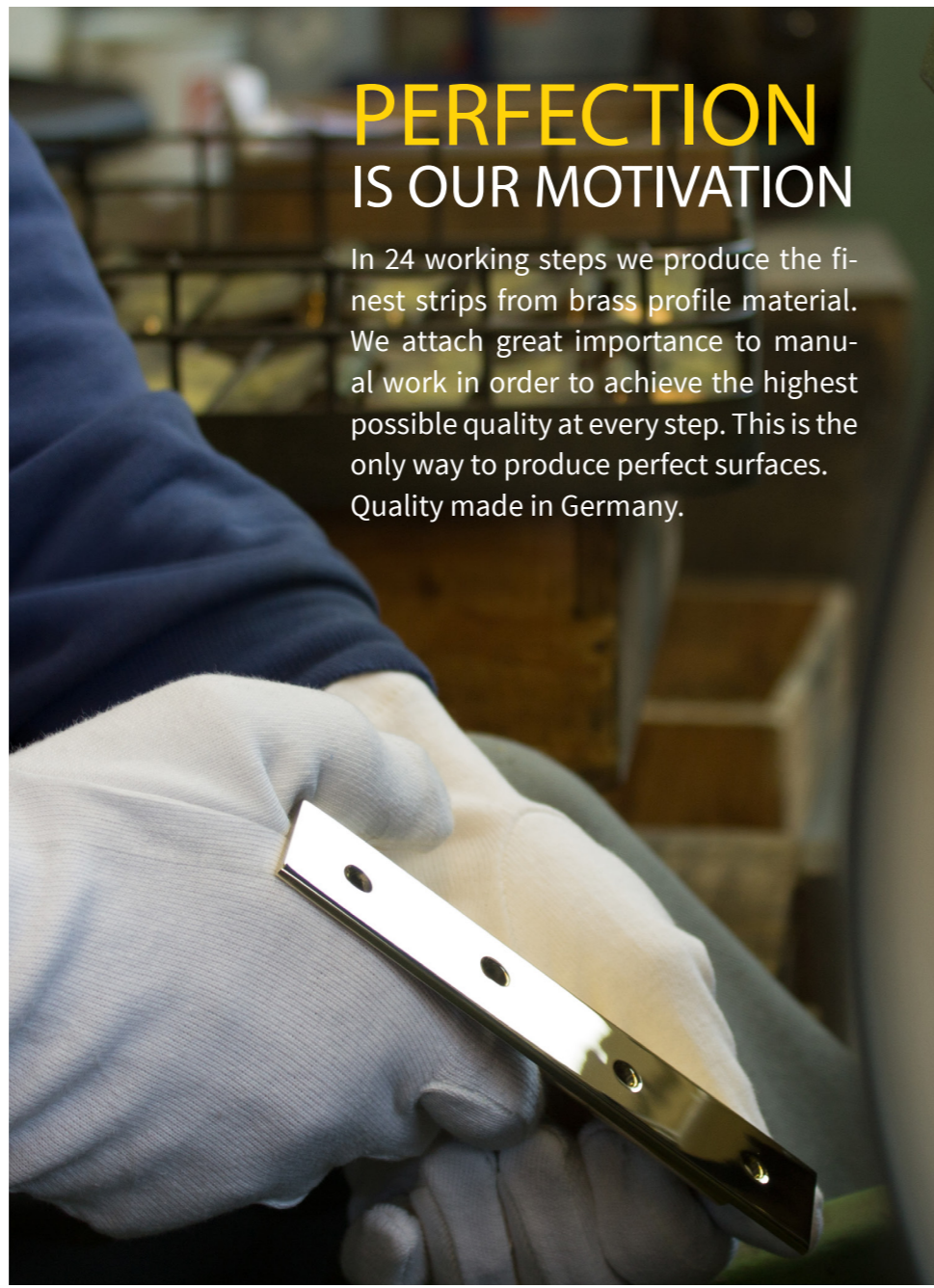
16 | copper

tin 2.0 nickel-plated polished

nickel dark brushed Brass polished

# QUALITY DOWN TO THE LAST DETAIL

Each of our tapes undergoes a rigorous testing before it goes out to our customers. Only when the surface and shine are perfect, the tapes are carefully packed and sent to the customer. We achieve this quality only through the best material quality, high quality requirements and our very strict controls.



# PERFECTION IS OUR MOTIVATION

In 24 working steps we produce the finest strips from brass profile material. We attach great importance to manual work in order to achieve the highest possible quality at every step. This is the only way to produce perfect surfaces. Quality made in Germany.

# 100 PERCENT MADE IN GERMANY



# NOBLE & EXCLUSIVE

A special door and a special house deserve an equally special door hinge. So we refine your hinge according to your wishes. Whether gold-plated or in your very own color. Together with the individually selected decorative buttons, the selectable colours and finishes, it is possible to put together your very own hinge.

Whether elegant or modern in trendy colours. Combinations of different materials of decorative buttons and hinges are also possible. So your style can also be continued on the hinges.



Friedhelm Schumacher OHG  
Zeppelinstraße 11  
47638 Straelen

Mail: [info@friedhelm-schumacher.de](mailto:info@friedhelm-schumacher.de)  
Tel.: +49 2834 943 891  
Fax: +49 2834 944 653  
Internet: [www.friedhelm-schumacher.de](http://www.friedhelm-schumacher.de)

